

Form **8879-EO**

### IRS e-file Signature Authorization for an Exempt Organization

OMB No. 1545-1878

For calendar year 2014, or fiscal year beginning 7/01, 2014, and ending 6/30, 20 15

**2014**

Department of the Treasury  
Internal Revenue Service

▶ Do not send to the IRS. Keep for your records.  
▶ Information about Form 8879-EO and its instructions is at [www.irs.gov/form8879eo](http://www.irs.gov/form8879eo).

Name of exempt organization **YORK TECHNICAL COLLEGE FOUNDATION,  
INC.**

Employer identification number  
**57-0756721**

Name and title of officer  
**MELANIE JONES  
EXECUTIVE DIRECTOR**

#### Part I Type of Return and Return Information (Whole Dollars Only)

Check the box for the return for which you are using this Form 8879-EO and enter the applicable amount, if any, from the return. If you check the box on line 1a, 2a, 3a, 4a, or 5a, below, and the amount on that line for the return being filed with this form was blank, then leave line 1b, 2b, 3b, 4b, or 5b, whichever is applicable, blank (do not enter -0-). But, if you entered -0- on the return, then enter -0- on the applicable line below. Do not complete more than 1 line in Part I.

1a Form 990 check here ▶ <input checked="" type="checkbox"/>	b Total revenue, if any (Form 990, Part VIII, column (A), line 12)	1b	<u>2,302,716</u>
2a Form 990-EZ check here ▶ <input type="checkbox"/>	b Total revenue, if any (Form 990-EZ, line 9)	2b	
3a Form 1120-POL check here ▶ <input type="checkbox"/>	b Total tax (Form 1120-POL, line 22)	3b	
4a Form 990-PF check here ▶ <input type="checkbox"/>	b Tax based on investment income (Form 990-PF, Part VI, line 5)	4b	
5a Form 8868 check here ▶ <input type="checkbox"/>	b Balance Due (Form 8868, Part I, line 3c or Part II, line 8c)	5b	

#### Part II Declaration and Signature Authorization of Officer

Under penalties of perjury, I declare that I am an officer of the above organization and that I have examined a copy of the organization's 2014 electronic return and accompanying schedules and statements and to the best of my knowledge and belief, they are true, correct, and complete. I further declare that the amount in Part I above is the amount shown on the copy of the organization's electronic return. I consent to allow my intermediate service provider, transmitter, or electronic return originator (ERO) to send the organization's return to the IRS and to receive from the IRS (a) an acknowledgement of receipt or reason for rejection of the transmission, (b) the reason for any delay in processing the return or refund, and (c) the date of any refund. If applicable, I authorize the U.S. Treasury and its designated Financial Agent to initiate an electronic funds withdrawal (direct debit) entry to the financial institution account indicated in the tax preparation software for payment of the organization's federal taxes owed on this return, and the financial institution to debit the entry to this account. To revoke a payment, I must contact the U.S. Treasury Financial Agent at 1-888-353-4537 no later than 2 business days prior to the payment (settlement) date. I also authorize the financial institutions involved in the processing of the electronic payment of taxes to receive confidential information necessary to answer inquiries and resolve issues related to the payment. I have selected a personal identification number (PIN) as my signature for the organization's electronic return and, if applicable, the organization's consent to electronic funds withdrawal.

Officer's PIN: check one box only

I authorize THE BRITTINGHAM GROUP, LLP to enter my PIN 27033 as my signature  
ERO firm name Enter five numbers, but do not enter all zeros

on the organization's tax year 2014 electronically filed return. If I have indicated within this return that a copy of the return is being filed with a state agency(ies) regulating charities as part of the IRS Fed/State program, I also authorize the aforementioned ERO to enter my PIN on the return's disclosure consent screen.

As an officer of the organization, I will enter my PIN as my signature on the organization's tax year 2014 electronically filed return. If I have indicated within this return that a copy of the return is being filed with a state agency(ies) regulating charities as part of the IRS Fed/State program, I will enter my PIN on the return's disclosure consent screen.

Officer's signature \_\_\_\_\_ Date ▶ 10/08/15

#### Part III Certification and Authentication

ERO's EFIN/PIN. Enter your six-digit electronic filing identification number (EFIN) followed by your five-digit self-selected PIN.

**57822204501**  
do not enter all zeros

I certify that the above numeric entry is my PIN, which is my signature on the 2014 electronically filed return for the organization indicated above. I confirm that I am submitting this return in accordance with the requirements of Pub. 4163, Modernized e-File (MeF) Information for Authorized IRS e-file Providers for Business Returns.

ERO's signature ▶ HARRY D DELOACH *Harry D DeLoach* Date ▶ 10/08/15

**ERO Must Retain This Form—See Instructions  
Do Not Submit This Form To the IRS Unless Requested To Do So**

For Paperwork Reduction Act Notice, see back of form.

Form **8879-EO** (2014)

**Return of Organization Exempt From Income Tax**  
Under section 501(c), 527, or 4947(a)(1) of the Internal Revenue Code (except private foundations)

OMB No. 1545-0047

**2014**  
Open to Public Inspection

Do not enter social security numbers on this form as it may be made public.  
Information about Form 990 and its instructions is at [www.irs.gov/form990](http://www.irs.gov/form990).

**A For the 2014 calendar year, or tax year beginning 07/01/14, and ending 06/30/15**

<b>B</b> Check if applicable: <input type="checkbox"/> Address change <input type="checkbox"/> Name change <input type="checkbox"/> Initial return <input type="checkbox"/> Final return/terminated <input type="checkbox"/> Amended return <input type="checkbox"/> Application pending	<b>C</b> Name of organization <b>YORK TECHNICAL COLLEGE FOUNDATION, INC.</b>		<b>D</b> Employer identification number <b>57-0756721</b>
	Doing business as Number and street (or P.O. box if mail is not delivered to street address) Room/suite <b>US 21 BY-PASS</b>		<b>E</b> Telephone number <b>803-327-8012</b>
	City or town, state or province, country, and ZIP or foreign postal code <b>ROCK HILL SC 29730</b>		<b>G</b> Gross receipts \$ <b>5,319,195</b>
	<b>F</b> Name and address of principal officer: <b>MS. MELANIE JONES</b> <b>452 S. ANDERSON ROAD</b> <b>ROCK HILL SC 29730</b>		<b>H(a)</b> Is this a group return for subordinates? <input type="checkbox"/> Yes <input checked="" type="checkbox"/> No <b>H(b)</b> Are all subordinates included? <input type="checkbox"/> Yes <input type="checkbox"/> No If "No," attach a list. (see instructions)
<b>I</b> Tax-exempt status: <input checked="" type="checkbox"/> 501(c)(3) <input type="checkbox"/> 501(c) ( ) (insert no.) <input type="checkbox"/> 4947(a)(1) or <input type="checkbox"/> 527			
<b>J</b> Website: <b>WWW.YORKTECH.EDU</b>			
<b>K</b> Form of organization: <input checked="" type="checkbox"/> Corporation <input type="checkbox"/> Trust <input type="checkbox"/> Association <input type="checkbox"/> Other			
		<b>L</b> Year of formation: <b>1983</b>	<b>M</b> State of legal domicile: <b>SC</b>

**Part I Summary**

Activities & Governance	1 Briefly describe the organization's mission or most significant activities: <b>THE SUPPORT OF YORK TECHNICAL COLLEGE.</b>			
	2 Check this box <input type="checkbox"/> if the organization discontinued its operations or disposed of more than 25% of its net assets.			
	3	Number of voting members of the governing body (Part VI, line 1a)	<b>17</b>	
	4	Number of independent voting members of the governing body (Part VI, line 1b)	<b>17</b>	
	5	Total number of individuals employed in calendar year 2014 (Part V, line 2a)	<b>0</b>	
	6	Total number of volunteers (estimate if necessary)	<b>0</b>	
	7a	Total unrelated business revenue from Part VIII, column (C), line 12	<b>0</b>	
7b	Net unrelated business taxable income from Form 990-T, line 34	<b>0</b>		
Revenue			Prior Year	Current Year
	8	Contributions and grants (Part VIII, line 1h)	<b>667,289</b>	<b>1,850,184</b>
	9	Program service revenue (Part VIII, line 2g)		<b>0</b>
	10	Investment income (Part VIII, column (A), lines 3, 4, and 7d)	<b>322,413</b>	<b>366,973</b>
	11	Other revenue (Part VIII, column (A), lines 5, 6d, 8c, 9c, 10c, and 11e)	<b>96,279</b>	<b>85,559</b>
	12	Total revenue - add lines 8 through 11 (must equal Part VIII, column (A), line 12)	<b>1,085,981</b>	<b>2,302,716</b>
Expenses	13	Grants and similar amounts paid (Part IX, column (A), lines 1-3)	<b>194,142</b>	<b>155,523</b>
	14	Benefits paid to or for members (Part IX, column (A), line 4)		<b>0</b>
	15	Salaries, other compensation, employee benefits (Part IX, column (A), lines 5-10)	<b>50,000</b>	<b>50,000</b>
	16a	Professional fundraising fees (Part IX, column (A), line 11e)	<b>95,470</b>	<b>34,019</b>
	b	Total fundraising expenses (Part IX, column (D), line 25) ▶ <b>45,155</b>		
	17	Other expenses (Part IX, column (A), lines 11a-11d, 11f-24e)	<b>121,364</b>	<b>93,327</b>
	18	Total expenses. Add lines 13-17 (must equal Part IX, column (A), line 25)	<b>460,976</b>	<b>332,869</b>
19	Revenue less expenses. Subtract line 18 from line 12	<b>625,005</b>	<b>1,969,847</b>	
Net Assets or Fund Balances			Beginning of Current Year	End of Year
	20	Total assets (Part X, line 16)	<b>7,597,719</b>	<b>9,255,672</b>
	21	Total liabilities (Part X, line 26)	<b>76,119</b>	<b>29,237</b>
22	Net assets or fund balances. Subtract line 21 from line 20	<b>7,521,600</b>	<b>9,226,435</b>	

**Part II Signature Block**

Under penalties of perjury, I declare that I have examined this return, including accompanying schedules and statements, and to the best of my knowledge and belief, it is true, correct, and complete. Declaration of preparer (other than officer) is based on all information of which preparer has any knowledge.

Sign Here	Signature of officer		Date	
	<b>MELANIE JONES</b> Type or print name and title		<b>EXECUTIVE DIRECTOR</b>	
Paid Preparer Use Only	Print/Type preparer's name	Preparer's signature	Date	Check <input checked="" type="checkbox"/> if self-employed PTIN
	<b>HARRY D DELOACH</b>	<b>HARRY D DELOACH</b> <i>H D DeLoach</i>	<b>10/22/15</b>	<b>P00592698</b>
	Firm's name ▶ <b>THE BRITTINGHAM GROUP, LLP</b>	Firm's EIN ▶ <b>46-4116137</b>	Firm's address ▶ <b>PO BOX 5949</b>	
	Firm's address ▶ <b>WEST COLUMBIA, SC 29171-5949</b>	Phone no. <b>803-739-3090</b>		

May the IRS discuss this return with the preparer shown above? (see instructions)  Yes  No

Part III Statement of Program Service Accomplishments

Check if Schedule O contains a response or note to any line in this Part III



1 Briefly describe the organization's mission:

SEE SCHEDULE O

2 Did the organization undertake any significant program services during the year which were not listed on the prior Form 990 or 990-EZ?

Yes No

If "Yes," describe these new services on Schedule O.

3 Did the organization cease conducting, or make significant changes in how it conducts, any program services?

Yes No

If "Yes," describe these changes on Schedule O.

4 Describe the organization's program service accomplishments for each of its three largest program services, as measured by expenses. Section 501(c)(3) and 501(c)(4) organizations are required to report the amount of grants and allocations to others, the total expenses, and revenue, if any, for each program service reported.

4a (Code: ) (Expenses \$ 158,523 including grants of \$ 155,523 ) (Revenue \$ ) GRANTS FOR PROGRAM SUPPORT AND SCHOLARSHIPS.

4b (Code: ) (Expenses \$ 59,885 including grants of \$ ) (Revenue \$ ) GRANTS AND UNRESTRICTED OPERATIONS INCLUDING GENERAL AND ADMINISTRATIVE.

4c (Code: ) (Expenses \$ including grants of \$ ) (Revenue \$ )

4d Other program services (Describe in Schedule O.)

(Expenses \$ including grants of \$ ) (Revenue \$ )

4e Total program service expenses 218,408

**Part IV Checklist of Required Schedules**

		Yes	No
1	Is the organization described in section 501(c)(3) or 4947(a)(1) (other than a private foundation)? If "Yes," complete Schedule A	X	
2	Is the organization required to complete Schedule B, Schedule of Contributors (see instructions)?	X	
3	Did the organization engage in direct or indirect political campaign activities on behalf of or in opposition to candidates for public office? If "Yes," complete Schedule C, Part I		X
4	<b>Section 501(c)(3) organizations.</b> Did the organization engage in lobbying activities, or have a section 501(h) election in effect during the tax year? If "Yes," complete Schedule C, Part II		X
5	Is the organization a section 501(c)(4), 501(c)(5), or 501(c)(6) organization that receives membership dues, assessments, or similar amounts as defined in Revenue Procedure 98-19? If "Yes," complete Schedule C, Part III		X
6	Did the organization maintain any donor advised funds or any similar funds or accounts for which donors have the right to provide advice on the distribution or investment of amounts in such funds or accounts? If "Yes," complete Schedule D, Part I		X
7	Did the organization receive or hold a conservation easement, including easements to preserve open space, the environment, historic land areas, or historic structures? If "Yes," complete Schedule D, Part II		X
8	Did the organization maintain collections of works of art, historical treasures, or other similar assets? If "Yes," complete Schedule D, Part III		X
9	Did the organization report an amount in Part X, line 21, for escrow or custodial account liability; serve as a custodian for amounts not listed in Part X; or provide credit counseling, debt management, credit repair, or debt negotiation services? If "Yes," complete Schedule D, Part IV		X
10	Did the organization, directly or through a related organization, hold assets in temporarily restricted endowments, permanent endowments, or quasi-endowments? If "Yes," complete Schedule D, Part V	X	
11	If the organization's answer to any of the following questions is "Yes," then complete Schedule D, Parts VI, VII, VIII, IX, or X as applicable.		
a	Did the organization report an amount for land, buildings, and equipment in Part X, line 10? If "Yes," complete Schedule D, Part VI	X	
b	Did the organization report an amount for investments—other securities in Part X, line 12 that is 5% or more of its total assets reported in Part X, line 16? If "Yes," complete Schedule D, Part VII		X
c	Did the organization report an amount for investments—program related in Part X, line 13 that is 5% or more of its total assets reported in Part X, line 16? If "Yes," complete Schedule D, Part VIII		X
d	Did the organization report an amount for other assets in Part X, line 15 that is 5% or more of its total assets reported in Part X, line 16? If "Yes," complete Schedule D, Part IX		X
e	Did the organization report an amount for other liabilities in Part X, line 25? If "Yes," complete Schedule D, Part X		X
f	Did the organization's separate or consolidated financial statements for the tax year include a footnote that addresses the organization's liability for uncertain tax positions under FIN 48 (ASC 740)? If "Yes," complete Schedule D, Part X		X
12a	Did the organization obtain separate, independent audited financial statements for the tax year? If "Yes," complete Schedule D, Parts XI and XII	X	
b	Was the organization included in consolidated, independent audited financial statements for the tax year? If "Yes," and if the organization answered "No" to line 12a, then completing Schedule D, Parts XI and XII is optional		X
13	Is the organization a school described in section 170(b)(1)(A)(ii)? If "Yes," complete Schedule E		X
14a	Did the organization maintain an office, employees, or agents outside of the United States?		X
b	Did the organization have aggregate revenues or expenses of more than \$10,000 from grantmaking, fundraising, business, investment, and program service activities outside the United States, or aggregate foreign investments valued at \$100,000 or more? If "Yes," complete Schedule F, Parts I and IV		X
15	Did the organization report on Part IX, column (A), line 3, more than \$5,000 of grants or other assistance to or for any foreign organization? If "Yes," complete Schedule F, Parts II and IV		X
16	Did the organization report on Part IX, column (A), line 3, more than \$5,000 of aggregate grants or other assistance to or for foreign individuals? If "Yes," complete Schedule F, Parts III and IV		X
17	Did the organization report a total of more than \$15,000 of expenses for professional fundraising services on Part IX, column (A), lines 6 and 11e? If "Yes," complete Schedule G, Part I (see instructions)	X	
18	Did the organization report more than \$15,000 total of fundraising event gross income and contributions on Part VIII, lines 1c and 8a? If "Yes," complete Schedule G, Part II		X
19	Did the organization report more than \$15,000 of gross income from gaming activities on Part VIII, line 9a? If "Yes," complete Schedule G, Part III		X
20a	Did the organization operate one or more hospital facilities? If "Yes," complete Schedule H		X
b	If "Yes" to line 20a, did the organization attach a copy of its audited financial statements to this return?		

**Part IV Checklist of Required Schedules (continued)**

		Yes	No
21	Did the organization report more than \$5,000 of grants or other assistance to any domestic organization or domestic government on Part IX, column (A), line 1? If "Yes," complete Schedule I, Parts I and II	X	
22	Did the organization report more than \$5,000 of grants or other assistance to or for domestic individuals on Part IX, column (A), line 2? If "Yes," complete Schedule I, Parts I and III	X	
23	Did the organization answer "Yes" to Part VII, Section A, line 3, 4, or 5 about compensation of the organization's current and former officers, directors, trustees, key employees, and highest compensated employees? If "Yes," complete Schedule J	X	
24a	Did the organization have a tax-exempt bond issue with an outstanding principal amount of more than \$100,000 as of the last day of the year, that was issued after December 31, 2002? If "Yes," answer lines 24b through 24d and complete Schedule K. If "No," go to line 25a		X
b	Did the organization invest any proceeds of tax-exempt bonds beyond a temporary period exception?		
c	Did the organization maintain an escrow account other than a refunding escrow at any time during the year to defease any tax-exempt bonds?		
d	Did the organization act as an "on behalf of" issuer for bonds outstanding at any time during the year?		
25a	<b>Section 501(c)(3), 501(c)(4), and 501(c)(29) organizations.</b> Did the organization engage in an excess benefit transaction with a disqualified person during the year? If "Yes," complete Schedule L, Part I		X
b	Is the organization aware that it engaged in an excess benefit transaction with a disqualified person in a prior year, and that the transaction has not been reported on any of the organization's prior Forms 990 or 990-EZ? If "Yes," complete Schedule L, Part I		X
26	Did the organization report any amount on Part X, line 5, 6, or 22 for receivables from or payables to any current or former officers, directors, trustees, key employees, highest compensated employees, or disqualified persons? If "Yes," complete Schedule L, Part II		X
27	Did the organization provide a grant or other assistance to an officer, director, trustee, key employee, substantial contributor or employee thereof, a grant selection committee member, or to a 35% controlled entity or family member of any of these persons? If "Yes," complete Schedule L, Part III		X
28	Was the organization a party to a business transaction with one of the following parties (see Schedule L, Part IV instructions for applicable filing thresholds, conditions, and exceptions):		
a	A current or former officer, director, trustee, or key employee? If "Yes," complete Schedule L, Part IV		X
b	A family member of a current or former officer, director, trustee, or key employee? If "Yes," complete Schedule L, Part IV		X
c	An entity of which a current or former officer, director, trustee, or key employee (or a family member thereof) was an officer, director, trustee, or direct or indirect owner? If "Yes," complete Schedule L, Part IV		X
29	Did the organization receive more than \$25,000 in non-cash contributions? If "Yes," complete Schedule M		X
30	Did the organization receive contributions of art, historical treasures, or other similar assets, or qualified conservation contributions? If "Yes," complete Schedule M		X
31	Did the organization liquidate, terminate, or dissolve and cease operations? If "Yes," complete Schedule N, Part I		X
32	Did the organization sell, exchange, dispose of, or transfer more than 25% of its net assets? If "Yes," complete Schedule N, Part II		X
33	Did the organization own 100% of an entity disregarded as separate from the organization under Regulations sections 301.7701-2 and 301.7701-3? If "Yes," complete Schedule R, Part I		X
34	Was the organization related to any tax-exempt or taxable entity? If "Yes," complete Schedule R, Parts II, III, or IV, and Part V, line 1	X	
35a	Did the organization have a controlled entity within the meaning of section 512(b)(13)?		X
b	If "Yes" to line 35a, did the organization receive any payment from or engage in any transaction with a controlled entity within the meaning of section 512(b)(13)? If "Yes," complete Schedule R, Part V, line 2		
36	<b>Section 501(c)(3) organizations.</b> Did the organization make any transfers to an exempt non-charitable related organization? If "Yes," complete Schedule R, Part V, line 2		X
37	Did the organization conduct more than 5% of its activities through an entity that is not a related organization and that is treated as a partnership for federal income tax purposes? If "Yes," complete Schedule R, Part VI		X
38	Did the organization complete Schedule O and provide explanations in Schedule O for Part VI, lines 11b and 19? <b>Note.</b> All Form 990 filers are required to complete Schedule O	X	

**Part V Statements Regarding Other IRS Filings and Tax Compliance**

Check if Schedule O contains a response or note to any line in this Part V

		Yes	No
1a	Enter the number reported in Box 3 of Form 1096. Enter -0- if not applicable		
1b	Enter the number of Forms W-2G included in line 1a. Enter -0- if not applicable		
1c	Did the organization comply with backup withholding rules for reportable payments to vendors and reportable gaming (gambling) winnings to prize winners?	X	
2a	Enter the number of employees reported on Form W-3, Transmittal of Wage and Tax Statements, filed for the calendar year ending with or within the year covered by this return		
2b	If at least one is reported on line 2a, did the organization file all required federal employment tax returns? <b>Note.</b> If the sum of lines 1a and 2a is greater than 250, you may be required to e-file (see instructions)		
3a	Did the organization have unrelated business gross income of \$1,000 or more during the year?		X
3b	If "Yes," has it filed a Form 990-T for this year? If "No" to line 3b, provide an explanation in Schedule O		
4a	At any time during the calendar year, did the organization have an interest in, or a signature or other authority over, a financial account in a foreign country (such as a bank account, securities account, or other financial account)?		X
4b	If "Yes," enter the name of the foreign country: <b>▶</b> See instructions for filing requirements for FinCEN Form 114, Report of Foreign Bank and Financial Accounts (FBAR).		
5a	Was the organization a party to a prohibited tax shelter transaction at any time during the tax year?		X
5b	Did any taxable party notify the organization that it was or is a party to a prohibited tax shelter transaction?		X
5c	If "Yes" to line 5a or 5b, did the organization file Form 8886-T?		
6a	Does the organization have annual gross receipts that are normally greater than \$100,000, and did the organization solicit any contributions that were not tax deductible as charitable contributions?		X
6b	If "Yes," did the organization include with every solicitation an express statement that such contributions or gifts were not tax deductible?		
<b>7 Organizations that may receive deductible contributions under section 170(c).</b>			
7a	Did the organization receive a payment in excess of \$75 made partly as a contribution and partly for goods and services provided to the payor?		X
7b	If "Yes," did the organization notify the donor of the value of the goods or services provided?		
7c	Did the organization sell, exchange, or otherwise dispose of tangible personal property for which it was required to file Form 8282?		X
7d	If "Yes," indicate the number of Forms 8282 filed during the year		
7e	Did the organization receive any funds, directly or indirectly, to pay premiums on a personal benefit contract?		X
7f	Did the organization, during the year, pay premiums, directly or indirectly, on a personal benefit contract?		X
7g	If the organization received a contribution of qualified intellectual property, did the organization file Form 8899 as required?		
7h	If the organization received a contribution of cars, boats, airplanes, or other vehicles, did the organization file a Form 1098-C?		X
8	<b>Sponsoring organizations maintaining donor advised funds.</b> Did a donor advised fund maintained by the sponsoring organization have excess business holdings at any time during the year?		X
<b>9 Sponsoring organizations maintaining donor advised funds.</b>			
9a	Did the sponsoring organization make any taxable distributions under section 4966?		
9b	Did the sponsoring organization make a distribution to a donor, donor advisor, or related person?		
<b>10 Section 501(c)(7) organizations. Enter:</b>			
10a	Initiation fees and capital contributions included on Part VIII, line 12		
10b	Gross receipts, included on Form 990, Part VIII, line 12, for public use of club facilities		
<b>11 Section 501(c)(12) organizations. Enter:</b>			
11a	Gross income from members or shareholders		
11b	Gross income from other sources (Do not net amounts due or paid to other sources against amounts due or received from them.)		
12a	<b>Section 4947(a)(1) non-exempt charitable trusts.</b> Is the organization filing Form 990 in lieu of Form 1041?		
12b	If "Yes," enter the amount of tax-exempt interest received or accrued during the year		
<b>13 Section 501(c)(29) qualified nonprofit health insurance issuers.</b>			
13a	Is the organization licensed to issue qualified health plans in more than one state? <b>Note.</b> See the instructions for additional information the organization must report on Schedule O.		
13b	Enter the amount of reserves the organization is required to maintain by the states in which the organization is licensed to issue qualified health plans		
13c	Enter the amount of reserves on hand		
14a	Did the organization receive any payments for indoor tanning services during the tax year?		X
14b	If "Yes," has it filed a Form 720 to report these payments? If "No," provide an explanation in Schedule O		

**Part VI Governance, Management, and Disclosure** For each "Yes" response to lines 2 through 7b below, and for a "No" response to line 8a, 8b, or 10b below, describe the circumstances, processes, or changes in Schedule O. See instructions. Check if Schedule O contains a response or note to any line in this Part VI

**Section A. Governing Body and Management**

		Yes	No
1a	Enter the number of voting members of the governing body at the end of the tax year If there are material differences in voting rights among members of the governing body, or if the governing body delegated broad authority to an executive committee or similar committee, explain in Schedule O.		
	1a	17	
b	Enter the number of voting members included in line 1a, above, who are independent		
	1b	17	
2	Did any officer, director, trustee, or key employee have a family relationship or a business relationship with any other officer, director, trustee, or key employee?		X
3	Did the organization delegate control over management duties customarily performed by or under the direct supervision of officers, directors, or trustees, or key employees to a management company or other person?		X
4	Did the organization make any significant changes to its governing documents since the prior Form 990 was filed?		X
5	Did the organization become aware during the year of a significant diversion of the organization's assets?		X
6	Did the organization have members or stockholders?	X	
7a	Did the organization have members, stockholders, or other persons who had the power to elect or appoint one or more members of the governing body?	X	
b	Are any governance decisions of the organization reserved to (or subject to approval by) members, stockholders, or persons other than the governing body?	X	
8	Did the organization contemporaneously document the meetings held or written actions undertaken during the year by the following:		
a	The governing body?	X	
b	Each committee with authority to act on behalf of the governing body?	X	
9	Is there any officer, director, trustee, or key employee listed in Part VII, Section A, who cannot be reached at the organization's mailing address? If "Yes," provide the names and addresses in Schedule O		X

**Section B. Policies** (This Section B requests information about policies not required by the Internal Revenue Code.)

		Yes	No
10a	Did the organization have local chapters, branches, or affiliates?		X
b	If "Yes," did the organization have written policies and procedures governing the activities of such chapters, affiliates, and branches to ensure their operations are consistent with the organization's exempt purposes?		
10b			
11a	Has the organization provided a complete copy of this Form 990 to all members of its governing body before filing the form?	X	
b	Describe in Schedule O the process, if any, used by the organization to review this Form 990.		
12a	Did the organization have a written conflict of interest policy? If "No," go to line 13	X	
b	Were officers, directors, or trustees, and key employees required to disclose annually interests that could give rise to conflicts?	X	
12b			
c	Did the organization regularly and consistently monitor and enforce compliance with the policy? If "Yes," describe in Schedule O how this was done	X	
12c			
13	Did the organization have a written whistleblower policy?	X	
14	Did the organization have a written document retention and destruction policy?	X	
14			
15	Did the process for determining compensation of the following persons include a review and approval by independent persons, comparability data, and contemporaneous substantiation of the deliberation and decision?		
a	The organization's CEO, Executive Director, or top management official		X
15a			
b	Other officers or key employees of the organization If "Yes" to line 15a or 15b, describe the process in Schedule O (see instructions).		X
15b			
16a	Did the organization invest in, contribute assets to, or participate in a joint venture or similar arrangement with a taxable entity during the year?		X
16a			
b	If "Yes," did the organization follow a written policy or procedure requiring the organization to evaluate its participation in joint venture arrangements under applicable federal tax law, and take steps to safeguard the organization's exempt status with respect to such arrangements?		
16b			

**Section C. Disclosure**

- 17 List the states with which a copy of this Form 990 is required to be filed **SC**
- 18 Section 6104 requires an organization to make its Forms 1023 (or 1024 if applicable), 990, and 990-T (Section 501(c)(3)s only) available for public inspection. Indicate how you made these available. Check all that apply.  
 Own website  Another's website  Upon request  Other (explain in Schedule O)
- 19 Describe in Schedule O whether (and if so, how) the organization made its governing documents, conflict of interest policy, and financial statements available to the public during the tax year.
- 20 State the name, address, and telephone number of the person who possesses the organization's books and records: **SC**

**MELANIE JONES**  
**ROCK HILL**

**452 S. ANDERSON ROAD**

**SC 29730**

**803-327-8012**

**Part VII Compensation of Officers, Directors, Trustees, Key Employees, Highest Compensated Employees, and Independent Contractors**Check if Schedule O contains a response or note to any line in this Part VII **Section A. Officers, Directors, Trustees, Key Employees, and Highest Compensated Employees**

1a Complete this table for all persons required to be listed. Report compensation for the calendar year ending with or within the organization's tax year.

- List all of the organization's current officers, directors, trustees (whether individuals or organizations), regardless of amount of compensation. Enter -0- in columns (D), (E), and (F) if no compensation was paid.
- List all of the organization's current key employees, if any. See instructions for definition of "key employee."
- List the organization's five current highest compensated employees (other than an officer, director, trustee, or key employee) who received reportable compensation (Box 5 of Form W-2 and/or Box 7 of Form 1099-MISC) of more than \$100,000 from the organization and any related organizations.
- List all of the organization's former officers, key employees, and highest compensated employees who received more than \$100,000 of reportable compensation from the organization and any related organizations.
- List all of the organization's former directors or trustees that received, in the capacity as a former director or trustee of the organization, more than \$10,000 of reportable compensation from the organization and any related organizations.

List persons in the following order: individual trustees or directors; institutional trustees; officers; key employees; highest compensated employees; and former such persons.

 Check this box if neither the organization nor any related organization compensated any current officer, director, or trustee.

(A) Name and Title	(B) Average hours per week (list any hours for related organizations below dotted line)	(C) Position (do not check more than one box, unless person is both an officer and a director/trustee)						(D) Reportable compensation from the organization (W-2/1099-MISC)	(E) Reportable compensation from related organizations (VV-2/1099-MISC)	(F) Estimated amount of other compensation from the organization and related organizations
		Individual trustee or director	Institutional trustee	Officer	Key employee	Highest compensated employee	Former			
(1) GREG RUTHERFORD ..... PRESIDENT YTC	8.00 0.00	X						50,000	141,882	0
(2) MELANIE JONES ..... EXECUTIVE DIRECTOR	10.00 0.00	X		X			0	119,173	0	0
(3) BARRY BRANCH ..... DIRECTOR	1.00 0.00	X					0	0	0	0
(4) TOM CAMP ..... DIRECTOR	1.00 0.00	X					0	0	0	0
(5) CHRIS CONLEY ..... VICE PRESIDENT	1.00 0.00	X		X			0	0	0	0
(6) BOB GRECO ..... DIRECTOR	1.00 0.00	X					0	0	0	0
(7) RICK JIRAN ..... PAST PRESIDENT	1.00 0.00	X		X			0	0	0	0
(8) HARRY MILLER, JR. ..... DIRECTOR	1.00 0.00	X					0	0	0	0
(9) NIKKI NASH ..... SECRETARY	1.00 0.00	X		X			0	0	0	0
(10) ANDY SHENE ..... TREASURER	1.00 0.00	X		X			0	0	0	0
(11) DAVID SHINN ..... DIRECTOR	1.00 0.00	X					0	0	0	0



**Part VII** Section A. Officers, Directors, Trustees, Key Employees, and Highest Compensated Employees (continued)

(A) Name and title	(B) Average hours per week (list any hours for related organizations below dotted line)	(C) Position (do not check more than one box, unless person is both an officer and a director/trustee)						(D) Reportable compensation from the organization (W-2/1099-MISC)	(E) Reportable compensation from related organizations (W-2/1099-MISC)	(F) Estimated amount of other compensation from the organization and related organizations
		Individual trustee or director	Institutional trustee	Officer	Key employee	Highest compensated employee	Former			
(12) JEFF SIGMON	1.00									
DIRECTOR	0.00	X					0	0	0	
(13) BRIAN SINGLETON	1.00									
PRESIDENT	0.00	X		X			0	0	0	
(14) DAVID WILLIAMS	1.00									
DIRECTOR	0.00	X					0	0	0	
(15) JEFFREY EASTERLING	1.00									
DIRECTOR	0.00	X					0	0	0	
(16) BILL MASTERTON	1.00									
DIRECTOR	0.00	X					0	0	0	
(17) AL REID	1.00									
DIRECTOR	0.00	X					0	0	0	
(18)										
(19)										
1b Sub-total							50,000	261,055		
c Total from continuation sheets to Part VII, Section A										
d Total (add lines 1b and 1c)							50,000	261,055		

2 Total number of individuals (including but not limited to those listed above) who received more than \$100,000 of reportable compensation from the organization **0**

	Yes	No
3 Did the organization list any former officer, director, or trustee, key employee, or highest compensated employee on line 1a? If "Yes," complete Schedule J for such individual		X
4 For any individual listed on line 1a, is the sum of reportable compensation and other compensation from the organization and related organizations greater than \$150,000? If "Yes," complete Schedule J for such individual	X	
5 Did any person listed on line 1a receive or accrue compensation from any unrelated organization or individual for services rendered to the organization? If "Yes," complete Schedule J for such person		X

**Section B. Independent Contractors**

1 Complete this table for your five highest compensated independent contractors that received more than \$100,000 of compensation from the organization. Report compensation for the calendar year ending with or within the organization's tax year.

(A) Name and business address	(B) Description of services	(C) Compensation

2 Total number of independent contractors (including but not limited to those listed above) who received more than \$100,000 of compensation from the organization **0**

Part VIII Statement of Revenue Check if Schedule O contains a response or note to any line in this Part VIII

Table with columns: (A) Total revenue, (B) Related or exempt function revenue, (C) Unrelated business revenue, (D) Revenue excluded from tax under sections 512-514. Rows include: 1a-1f Contributions, Gifts, Grants and Other Similar Amounts; 2a-2f Program Service Revenue; 3-5 Investment income; 6a-6d Rental income; 7a-7d Gain or loss from sales of assets; 8a-8c Fundraising events; 9a-9c Gaming activities; 10a-10c Sales of inventory; 11a-11e Miscellaneous Revenue; 12 Total revenue.

**Part IX Statement of Functional Expenses**

Section 501(c)(3) and 501(c)(4) organizations must complete all columns. All other organizations must complete column (A).

Check if Schedule O contains a response or note to any line in this Part IX

Do not include amounts reported on lines 6b, 7b, 8b, 9b, and 10b of Part VIII.	(A) Total expenses	(B) Program service expenses	(C) Management and general expenses	(D) Fundraising expenses
1 Grants and other assistance to domestic organizations and domestic governments. See Part IV, line 21	54,643	54,643		
2 Grants and other assistance to domestic individuals. See Part IV, line 22	100,880	100,880		
3 Grants and other assistance to foreign organizations, foreign governments, and foreign individuals. See Part IV, lines 15 and 16				
4 Benefits paid to or for members				
5 Compensation of current officers, directors, trustees, and key employees	50,000		50,000	
6 Compensation not included above, to disqualified persons (as defined under section 4958(f)(1)) and persons described in section 4958(c)(3)(B)				
7 Other salaries and wages				
8 Pension plan accruals and contributions (include section 401(k) and 403(b) employer contributions)				
9 Other employee benefits				
10 Payroll taxes				
11 Fees for services (non-employees):				
a Management				
b Legal				
c Accounting	10,911		10,911	
d Lobbying				
e Professional fundraising services. See Part IV, line 17	34,019			34,019
f Investment management fees				
g Other. (If line 11g amount exceeds 10% of line 25, column (A) amount, list line 11g expenses on Schedule O.)	4,500		4,500	
12 Advertising and promotion	11,136			11,136
13 Office expenses				
14 Information technology	21,521		21,521	
15 Royalties				
16 Occupancy	37,966	37,966		
17 Travel				
18 Payments of travel or entertainment expenses for any federal, state, or local public officials				
19 Conferences, conventions, and meetings	1,621		1,621	
20 Interest				
21 Payments to affiliates				
22 Depreciation, depletion, and amortization	24,919	24,919		
23 Insurance	2,896		2,896	
24 Other expenses. Itemize expenses not covered above (List miscellaneous expenses in line 24e. If line 24e amount exceeds 10% of line 25, column (A) amount, list line 24e expenses on Schedule O.)				
a MISCELLANOUES	1,437		1,437	
b CHECKING ACCOUNT FEES	63		63	
c PRIOR YEAR CORRECTION	-23,643		-23,643	
d				
e All other expenses				
25 Total functional expenses. Add lines 1 through 24e	332,869	218,408	69,306	45,155
26 Joint costs. Complete this line only if the organization reported in column (B) joint costs from a combined educational campaign and fundraising solicitation. Check here <input type="checkbox"/> if following SOP 98-2 (ASC 958-720)				

**Part X Balance Sheet**

Check if Schedule O contains a response or note to any line in this Part X

		(A) Beginning of year		(B) End of year		
Assets	1	Cash—non-interest bearing	18,215	1	742,206	
	2	Savings and temporary cash investments		2		
	3	Pledges and grants receivable, net	17,315	3	911,702	
	4	Accounts receivable, net	30,619	4		
	5	Loans and other receivables from current and former officers, directors, trustees, key employees, and highest compensated employees. Complete Part II of Schedule L		5		
	6	Loans and other receivables from other disqualified persons (as defined under section 4958(f)(1)), persons described in section 4958(c)(3)(B), and contributing employers and sponsoring organizations of section 501(c)(9) voluntary employees' beneficiary organizations (see instructions). Complete Part II of Schedule L		6		
	7	Notes and loans receivable, net		7		
	8	Inventories for sale or use		8		
	9	Prepaid expenses and deferred charges		9		
	10a	Land, buildings, and equipment: cost or other basis. Complete Part VI of Schedule D	10a	1,284,377		
	b	Less: accumulated depreciation	10b	262,764	10c	1,021,613
	11	Investments—publicly traded securities	6,285,411	11	6,380,644	
	12	Investments—other securities. See Part IV, line 11		12		
	13	Investments—program-related. See Part IV, line 11		13		
	14	Intangible assets		14		
	15	Other assets. See Part IV, line 11	199,628	15	199,507	
16	<b>Total assets.</b> Add lines 1 through 15 (must equal line 34)	<b>7,597,719</b>	<b>16</b>	<b>9,255,672</b>		
Liabilities	17	Accounts payable and accrued expenses	76,119	17	29,237	
	18	Grants payable		18		
	19	Deferred revenue		19		
	20	Tax-exempt bond liabilities		20		
	21	Escrow or custodial account liability. Complete Part IV of Schedule D		21		
	22	Loans and other payables to current and former officers, directors, trustees, key employees, highest compensated employees, and disqualified persons. Complete Part II of Schedule L		22		
	23	Secured mortgages and notes payable to unrelated third parties		23		
	24	Unsecured notes and loans payable to unrelated third parties		24		
	25	Other liabilities (including federal income tax, payables to related third parties, and other liabilities not included on lines 17-24). Complete Part X of Schedule D		25		
	26	<b>Total liabilities.</b> Add lines 17 through 25	<b>76,119</b>	<b>26</b>	<b>29,237</b>	
Net Assets or Fund Balances	Organizations that follow SFAS 117 (ASC 958), check here <input checked="" type="checkbox"/> and complete lines 27 through 29, and lines 33 and 34.					
	27	Unrestricted net assets	776,602	27	1,216,936	
	28	Temporarily restricted net assets	3,328,889	28	4,566,386	
	29	Permanently restricted net assets	3,416,109	29	3,443,113	
	Organizations that do not follow SFAS 117 (ASC 958), check here <input type="checkbox"/> and complete lines 30 through 34.					
	30	Capital stock or trust principal, or current funds		30		
	31	Paid-in or capital surplus, or land, building, or equipment fund		31		
	32	Retained earnings, endowment, accumulated income, or other funds		32		
33	<b>Total net assets or fund balances</b>	<b>7,521,600</b>	<b>33</b>	<b>9,226,435</b>		
34	<b>Total liabilities and net assets/fund balances</b>	<b>7,597,719</b>	<b>34</b>	<b>9,255,672</b>		

**Part XI Reconciliation of Net Assets**

Check if Schedule O contains a response or note to any line in this Part XI

1	Total revenue (must equal Part VIII, column (A), line 12)	1	2,302,716
2	Total expenses (must equal Part IX, column (A), line 25)	2	332,869
3	Revenue less expenses. Subtract line 2 from line 1	3	1,969,847
4	Net assets or fund balances at beginning of year (must equal Part X, line 33, column (A))	4	7,521,600
5	Net unrealized gains (losses) on investments	5	-265,012
6	Donated services and use of facilities	6	
7	Investment expenses	7	
8	Prior period adjustments	8	
9	Other changes in net assets or fund balances (explain in Schedule O)	9	
10	Net assets or fund balances at end of year. Combine lines 3 through 9 (must equal Part X, line 33, column (B))	10	9,226,435

**Part XII Financial Statements and Reporting**

Check if Schedule O contains a response or note to any line in this Part XII

- 1 Accounting method used to prepare the Form 990:  Cash  Accrual  Other \_\_\_\_\_  
If the organization changed its method of accounting from a prior year or checked "Other," explain in Schedule O.
- 2a Were the organization's financial statements compiled or reviewed by an independent accountant?  
If "Yes," check a box below to indicate whether the financial statements for the year were compiled or reviewed on a separate basis, consolidated basis, or both:  
 Separate basis  Consolidated basis  Both consolidated and separate basis
- b Were the organization's financial statements audited by an independent accountant?  
If "Yes," check a box below to indicate whether the financial statements for the year were audited on a separate basis, consolidated basis, or both:  
 Separate basis  Consolidated basis  Both consolidated and separate basis
- c If "Yes" to line 2a or 2b, does the organization have a committee that assumes responsibility for oversight of the audit, review, or compilation of its financial statements and selection of an independent accountant?  
If the organization changed either its oversight process or selection process during the tax year, explain in Schedule O.
- 3a As a result of a federal award, was the organization required to undergo an audit or audits as set forth in the Single Audit Act and OMB Circular A-133?
- b If "Yes," did the organization undergo the required audit or audits? If the organization did not undergo the required audit or audits, explain why in Schedule O and describe any steps taken to undergo such audits.

	Yes	No
2a		X
2b	X	
2c	X	
3a		X
3b		

**SCHEDULE A**  
**(Form 990 or 990-EZ)**

**Public Charity Status and Public Support**

Complete if the organization is a section 501(c)(3) organization or a section 4947(a)(1) nonexempt charitable trust.

▶ Attach to Form 990 or Form 990-EZ.

OMB No. 1545-0047

**2014**

Open to Public Inspection

Department of the Treasury  
Internal Revenue Service

▶ Information about Schedule A (Form 990 or 990-EZ) and its instructions is at [www.irs.gov/form990](http://www.irs.gov/form990).

Name of the organization

**YORK TECHNICAL COLLEGE FOUNDATION, INC.**

Employer identification number

**57-0756721**

**Part I Reason for Public Charity Status** (All organizations must complete this part.) See instructions.

The organization is not a private foundation because it is: (For lines 1 through 11, check only one box.)

- 1  A church, convention of churches, or association of churches described in section 170(b)(1)(A)(i).
- 2  A school described in section 170(b)(1)(A)(ii). (Attach Schedule E.)
- 3  A hospital or a cooperative hospital service organization described in section 170(b)(1)(A)(iii).
- 4  A medical research organization operated in conjunction with a hospital described in section 170(b)(1)(A)(iii). Enter the hospital's name, city, and state: .....
- 5  An organization operated for the benefit of a college or university owned or operated by a governmental unit described in section 170(b)(1)(A)(iv). (Complete Part II.)
- 6  A federal, state, or local government or governmental unit described in section 170(b)(1)(A)(v).
- 7  An organization that normally receives a substantial part of its support from a governmental unit or from the general public described in section 170(b)(1)(A)(vi). (Complete Part II.)
- 8  A community trust described in section 170(b)(1)(A)(vi). (Complete Part II.)
- 9  An organization that normally receives: (1) more than 33 1/3% of its support from contributions, membership fees, and gross receipts from activities related to its exempt functions—subject to certain exceptions, and (2) no more than 33 1/3% of its support from gross investment income and unrelated business taxable income (less section 511 tax) from businesses acquired by the organization after June 30, 1975. See section 509(a)(2). (Complete Part III.)
- 10  An organization organized and operated exclusively to test for public safety. See section 509(a)(4).
- 11  An organization organized and operated exclusively for the benefit of, to perform the functions of, or to carry out the purposes of one or more publicly supported organizations described in section 509(a)(1) or section 509(a)(2). See section 509(a)(3). Check the box in lines 11a through 11d that describes the type of supporting organization and complete lines 11e, 11f, and 11g.
  - a  Type I. A supporting organization operated, supervised, or controlled by its supported organization(s), typically by giving the supported organization(s) the power to regularly appoint or elect a majority of the directors or trustees of the supporting organization. You must complete Part IV, Sections A and B.
  - b  Type II. A supporting organization supervised or controlled in connection with its supported organization(s), by having control or management of the supporting organization vested in the same persons that control or manage the supported organization(s). You must complete Part IV, Sections A and C.
  - c  Type III functionally integrated. A supporting organization operated in connection with, and functionally integrated with, its supported organization(s) (see instructions). You must complete Part IV, Sections A, D, and E.
  - d  Type III non-functionally integrated. A supporting organization operated in connection with its supported organization(s) that is not functionally integrated. The organization generally must satisfy a distribution requirement and an attentiveness requirement (see instructions). You must complete Part IV, Sections A and D, and Part V.
  - e  Check this box if the organization received a written determination from the IRS that it is a Type I, Type II, Type III functionally integrated, or Type III non-functionally integrated supporting organization.
  - f Enter the number of supported organizations
  - g Provide the following information about the supported organization(s).

(i) Name of supported organization	(ii) EIN	(iii) Type of organization (described on lines 1-9 above or IRC section (see instructions))	(iv) Is the organization listed in your governing document?		(v) Amount of monetary support (see instructions)	(vi) Amount of other support (see instructions)
			Yes	No		
(A)						
(B)						
(C)						
(D)						
(E)						
<b>Total</b>						

**Part II Support Schedule for Organizations Described in Sections 170(b)(1)(A)(iv) and 170(b)(1)(A)(vi)**

(Complete only if you checked the box on line 5, 7, or 8 of Part I or if the organization failed to qualify under Part III. If the organization fails to qualify under the tests listed below, please complete Part III.)

**Section A. Public Support**

Calendar year (or fiscal year beginning in) ▶	(a) 2010	(b) 2011	(c) 2012	(d) 2013	(e) 2014	(f) Total
1 Gifts, grants, contributions, and membership fees received. (Do not include any "unusual grants.")	1,295,300	392,968	172,257	667,289	1,850,184	4,377,998
2 Tax revenues levied for the organization's benefit and either paid to or expended on its behalf						
3 The value of services or facilities furnished by a governmental unit to the organization without charge						
4 Total. Add lines 1 through 3	1,295,300	392,968	172,257	667,289	1,850,184	4,377,998
5 The portion of total contributions by each person (other than a governmental unit or publicly supported organization) included on line 1 that exceeds 2% of the amount shown on line 11, column (f)						398,226
6 Public support. Subtract line 5 from line 4.						3,979,772

**Section B. Total Support**

Calendar year (or fiscal year beginning in) ▶	(a) 2010	(b) 2011	(c) 2012	(d) 2013	(e) 2014	(f) Total
7 Amounts from line 4	1,295,300	392,968	172,257	667,289	1,850,184	4,377,998
8 Gross income from interest, dividends, payments received on securities loans, rents, royalties and income from similar sources	342,898	61,559	61,428	72,988	171,823	710,696
9 Net income from unrelated business activities, whether or not the business is regularly carried on						
10 Other income. Do not include gain or loss from the sale of capital assets (Explain in Part VI.)						
11 Total support. Add lines 7 through 10						5,088,694
12 Gross receipts from related activities, etc. (see instructions)					12	947
13 First five years. If the Form 990 is for the organization's first, second, third, fourth, or fifth tax year as a section 501(c)(3) organization, check this box and stop here <input type="checkbox"/>						

**Section C. Computation of Public Support Percentage**

14 Public support percentage for 2014 (line 6, column (f) divided by line 11, column (f))	14	78.21%
15 Public support percentage from 2013 Schedule A, Part II, line 14	15	70.44%
16a 33 1/3% support test—2014. If the organization did not check the box on line 13, and line 14 is 33 1/3% or more, check this box and stop here. The organization qualifies as a publicly supported organization <input checked="" type="checkbox"/>		
b 33 1/3% support test—2013. If the organization did not check a box on line 13 or 16a, and line 15 is 33 1/3% or more, check this box and stop here. The organization qualifies as a publicly supported organization <input type="checkbox"/>		
17a 10%-facts-and-circumstances test—2014. If the organization did not check a box on line 13, 16a, or 16b, and line 14 is 10% or more, and if the organization meets the "facts-and-circumstances" test, check this box and stop here. Explain in Part VI how the organization meets the "facts-and-circumstances" test. The organization qualifies as a publicly supported organization <input type="checkbox"/>		
b 10%-facts-and-circumstances test—2013. If the organization did not check a box on line 13, 16a, 16b, or 17a, and line 15 is 10% or more, and if the organization meets the "facts-and-circumstances" test, check this box and stop here. Explain in Part VI how the organization meets the "facts-and-circumstances" test. The organization qualifies as a publicly supported organization <input type="checkbox"/>		
18 Private foundation. If the organization did not check a box on line 13, 16a, 16b, 17a, or 17b, check this box and see instructions <input type="checkbox"/>		

**Part III Support Schedule for Organizations Described in Section 509(a)(2)**

(Complete only if you checked the box on line 9 of Part I or if the organization failed to qualify under Part II. If the organization fails to qualify under the tests listed below, please complete Part II.)

**Section A. Public Support**

Calendar year (or fiscal year beginning in) ▶	(a) 2010	(b) 2011	(c) 2012	(d) 2013	(e) 2014	(f) Total
1 Gifts, grants, contributions, and membership fees received. (Do not include any "unusual grants.")						
2 Gross receipts from admissions, merchandise sold or services performed, or facilities furnished in any activity that is related to the organization's tax-exempt purpose						
3 Gross receipts from activities that are not an unrelated trade or business under section 513						
4 Tax revenues levied for the organization's benefit and either paid to or expended on its behalf						
5 The value of services or facilities furnished by a governmental unit to the organization without charge						
6 Total. Add lines 1 through 5						
7a Amounts included on lines 1, 2, and 3 received from disqualified persons						
b Amounts included on lines 2 and 3 received from other than disqualified persons that exceed the greater of \$5,000 or 1% of the amount on line 13 for the year						
c Add lines 7a and 7b						
8 Public support (Subtract line 7c from line 6.)						

**Section B. Total Support**

Calendar year (or fiscal year beginning in) ▶	(a) 2010	(b) 2011	(c) 2012	(d) 2013	(e) 2014	(f) Total
9 Amounts from line 6						
10a Gross income from interest, dividends, payments received on securities loans, rents, royalties and income from similar sources						
b Unrelated business taxable income (less section 511 taxes) from businesses acquired after June 30, 1975						
c Add lines 10a and 10b						
11 Net income from unrelated business activities not included in line 10b, whether or not the business is regularly carried on						
12 Other income. Do not include gain or loss from the sale of capital assets (Explain in Part VI.)						
13 Total support. (Add lines 9, 10c, 11, and 12.)						

14 First five years. If the Form 990 is for the organization's first, second, third, fourth, or fifth tax year as a section 501(c)(3) organization, check this box and stop here

**Section C. Computation of Public Support Percentage**

15 Public support percentage for 2014 (line 8, column (f) divided by line 13, column (f))	15	%
16 Public support percentage from 2013 Schedule A, Part III, line 15	16	%

**Section D. Computation of Investment Income Percentage**

17 Investment income percentage for 2014 (line 10c, column (f) divided by line 13, column (f))	17	%
18 Investment income percentage from 2013 Schedule A, Part III, line 17	18	%

19a 33 1/3% support tests—2014. If the organization did not check the box on line 14, and line 15 is more than 33 1/3%, and line 17 is not more than 33 1/3%, check this box and stop here. The organization qualifies as a publicly supported organization

b 33 1/3% support tests—2013. If the organization did not check a box on line 14 or line 19a, and line 16 is more than 33 1/3%, and line 18 is not more than 33 1/3%, check this box and stop here. The organization qualifies as a publicly supported organization

20 Private foundation. If the organization did not check a box on line 14, 19a, or 19b, check this box and see instructions



**Part IV Supporting Organizations**

(Complete only if you checked a box on line 11 of Part I. If you checked 11a of Part I, complete Sections A and B. If you checked 11b of Part I, complete Sections A and C. If you checked 11c of Part I, complete Sections A, D, and E. If you checked 11d of Part I, complete Sections A and D, and complete Part V.)

**Section A. All Supporting Organizations**

- 1 Are all of the organization's supported organizations listed by name in the organization's governing documents? If "No," describe in Part VI how the supported organizations are designated. If designated by class or purpose, describe the designation. If historic and continuing relationship, explain.
- 2 Did the organization have any supported organization that does not have an IRS determination of status under section 509(a)(1) or (2)? If "Yes," explain in Part VI how the organization determined that the supported organization was described in section 509(a)(1) or (2).
- 3a Did the organization have a supported organization described in section 501(c)(4), (5), or (6)? If "Yes," answer (b) and (c) below.
- b Did the organization confirm that each supported organization qualified under section 501(c)(4), (5), or (6) and satisfied the public support tests under section 509(a)(2)? If "Yes," describe in Part VI when and how the organization made the determination.
- c Did the organization ensure that all support to such organizations was used exclusively for section 170(c)(2) (B) purposes? If "Yes," explain in Part VI what controls the organization put in place to ensure such use.
- 4a Was any supported organization not organized in the United States ("foreign supported organization")? If "Yes" and if you checked 11a or 11b in Part I, answer (b) and (c) below.
- b Did the organization have ultimate control and discretion in deciding whether to make grants to the foreign supported organization? If "Yes," describe in Part VI how the organization had such control and discretion despite being controlled or supervised by or in connection with its supported organizations.
- c Did the organization support any foreign supported organization that does not have an IRS determination under sections 501(c)(3) and 509(a)(1) or (2)? If "Yes," explain in Part VI what controls the organization used to ensure that all support to the foreign supported organization was used exclusively for section 170(c)(2)(B) purposes.
- 5a Did the organization add, substitute, or remove any supported organizations during the tax year? If "Yes," answer (b) and (c) below (if applicable). Also, provide detail in Part VI, including (i) the names and EIN numbers of the supported organizations added, substituted, or removed, (ii) the reasons for each such action, (iii) the authority under the organization's organizing document authorizing such action, and (iv) how the action was accomplished (such as by amendment to the organizing document).
- b **Type I or Type II only.** Was any added or substituted supported organization part of a class already designated in the organization's organizing document?
- c **Substitutions only.** Was the substitution the result of an event beyond the organization's control?
- 6 Did the organization provide support (whether in the form of grants or the provision of services or facilities) to anyone other than (a) its supported organizations; (b) individuals that are part of the charitable class benefited by one or more of its supported organizations; or (c) other supporting organizations that also support or benefit one or more of the filing organization's supported organizations? If "Yes," provide detail in Part VI.
- 7 Did the organization provide a grant, loan, compensation, or other similar payment to a substantial contributor (defined in IRC 4958(c)(3)(C)), a family member of a substantial contributor, or a 35-percent controlled entity with regard to a substantial contributor? If "Yes," complete Part I of Schedule L (Form 990).
- 8 Did the organization make a loan to a disqualified person (as defined in section 4958) not described in line 7? If "Yes," complete Part I of Schedule L (Form 990).
- 9a Was the organization controlled directly or indirectly at any time during the tax year by one or more disqualified persons as defined in section 4946 (other than foundation managers and organizations described in section 509(a)(1) or (2))? If "Yes," provide detail in Part VI.
- b Did one or more disqualified persons (as defined in line 9(a)) hold a controlling interest in any entity in which the supporting organization had an interest? If "Yes," provide detail in Part VI.
- c Did a disqualified person (as defined in line 9(a)) have an ownership interest in, or derive any personal benefit from, assets in which the supporting organization also had an interest? If "Yes," provide detail in Part VI.
- 10a Was the organization subject to the excess business holdings rules of IRC 4943 because of IRC 4943(f) (regarding certain Type II supporting organizations, and all Type III non-functionally integrated supporting organizations)? If "Yes," answer (b) below.
- b Did the organization have any excess business holdings in the tax year? (Use Schedule C, Form 4720, to determine whether the organization had excess business holdings.)

	Yes	No
1		
2		
3a		
3b		
3c		
4a		
4b		
4c		
5a		
5b		
5c		
6		
7		
8		
9a		
9b		
9c		
10a		
10b		

**Part IV Supporting Organizations (continued)**

	Yes	No
11 Has the organization accepted a gift or contribution from any of the following persons?		
a A person who directly or indirectly controls, either alone or together with persons described in (b) and (c) below, the governing body of a supported organization?		
11a		
b A family member of a person described in (a) above?		
11b		
c A 35% controlled entity of a person described in (a) or (b) above? If "Yes" to a, b, or c, provide detail in Part VI.		
11c		

**Section B. Type I Supporting Organizations**

	Yes	No
1 Did the directors, trustees, or membership of one or more supported organizations have the power to regularly appoint or elect at least a majority of the organization's directors or trustees at all times during the tax year? If "No," describe in Part VI how the supported organization(s) effectively operated, supervised, or controlled the organization's activities. If the organization had more than one supported organization, describe how the powers to appoint and/or remove directors or trustees were allocated among the supported organizations and what conditions or restrictions, if any, applied to such powers during the tax year.		
1		
2 Did the organization operate for the benefit of any supported organization other than the supported organization(s) that operated, supervised, or controlled the supporting organization? If "Yes," explain in Part VI how providing such benefit carried out the purposes of the supported organization(s) that operated, supervised, or controlled the supporting organization.		
2		

**Section C. Type II Supporting Organizations**

	Yes	No
1 Were a majority of the organization's directors or trustees during the tax year also a majority of the directors or trustees of each of the organization's supported organization(s)? If "No," describe in Part VI how control or management of the supporting organization was vested in the same persons that controlled or managed the supported organization(s).		
1		

**Section D. All Type III Supporting Organizations**

	Yes	No
1 Did the organization provide to each of its supported organizations, by the last day of the fifth month of the organization's tax year, (1) a written notice describing the type and amount of support provided during the prior tax year, (2) a copy of the Form 990 that was most recently filed as of the date of notification, and (3) copies of the organization's governing documents in effect on the date of notification, to the extent not previously provided?		
1		
2 Were any of the organization's officers, directors, or trustees either (i) appointed or elected by the supported organization(s) or (ii) serving on the governing body of a supported organization? If "No," explain in Part VI how the organization maintained a close and continuous working relationship with the supported organization(s).		
2		
3 By reason of the relationship described in (2), did the organization's supported organizations have a significant voice in the organization's investment policies and in directing the use of the organization's income or assets at all times during the tax year? If "Yes," describe in Part VI the role the organization's supported organizations played in this regard.		
3		

**Section E. Type III Functionally-Integrated Supporting Organizations**

- 1 Check the box next to the method that the organization used to satisfy the Integral Part Test during the year (see instructions):
- a  The organization satisfied the Activities Test. Complete line 2 below.
  - b  The organization is the parent of each of its supported organizations. Complete line 3 below.
  - c  The organization supported a governmental entity. Describe in Part VI how you supported a government entity (see instructions).

2 Activities Test. Answer (a) and (b) below.

	Yes	No
a Did substantially all of the organization's activities during the tax year directly further the exempt purposes of the supported organization(s) to which the organization was responsive? If "Yes," then in Part VI identify those supported organizations and explain how these activities directly furthered their exempt purposes, how the organization was responsive to those supported organizations, and how the organization determined that these activities constituted substantially all of its activities.		
2a		
b Did the activities described in (a) constitute activities that, but for the organization's involvement, one or more of the organization's supported organization(s) would have been engaged in? If "Yes," explain in Part VI the reasons for the organization's position that its supported organization(s) would have engaged in these activities but for the organization's involvement.		
2b		
3 Parent of Supported Organizations. Answer (a) and (b) below.		
a Did the organization have the power to regularly appoint or elect a majority of the officers, directors, or trustees of each of the supported organizations? Provide details in Part VI.		
3a		
b Did the organization exercise a substantial degree of direction over the policies, programs, and activities of each of its supported organizations? If "Yes," describe in Part VI the role played by the organization in this regard.		
3b		

**Part V Type III Non-Functionally Integrated 509(a)(3) Supporting Organizations**

1  Check here if the organization satisfied the Integral Part Test as a qualifying trust as on Nov. 20, 1970. See instructions. All other Type III non-functionally integrated supporting organizations must complete Sections A through E.

Section A - Adjusted Net Income		(A) Prior Year	(B) Current Year (optional)
1	Net short-term capital gain	1	
2	Recoveries of prior-year distributions	2	
3	Other gross income (see instructions)	3	
4	Add lines 1 through 3	4	
5	Depreciation and depletion	5	
6	Portion of operating expenses paid or incurred for production or collection of gross income or for management, conservation, or maintenance of property held for production of income (see instructions)	6	
7	Other expenses (see instructions)	7	
8	<b>Adjusted Net Income</b> (subtract lines 5, 6 and 7 from line 4)	8	

Section B - Minimum Asset Amount		(A) Prior Year	(B) Current Year (optional)
1	Aggregate fair market value of all non-exempt-use assets (see instructions for short tax year or assets held for part of year):		
a	Average monthly value of securities	1a	
b	Average monthly cash balances	1b	
c	Fair market value of other non-exempt-use assets	1c	
d	Total (add lines 1a, 1b, and 1c)	1d	
e	Discount claimed for blockage or other factors (explain in detail in Part VI):		
2	Acquisition indebtedness applicable to non-exempt-use assets	2	
3	Subtract line 2 from line 1d	3	
4	Cash deemed held for exempt use. Enter 1-1/2% of line 3 (for greater amount, see instructions).	4	
5	Net value of non-exempt-use assets (subtract line 4 from line 3)	5	
6	Multiply line 5 by .035	6	
7	Recoveries of prior-year distributions	7	
8	<b>Minimum Asset Amount</b> (add line 7 to line 6)	8	

Section C - Distributable Amount			Current Year
1	Adjusted net income for prior year (from Section A, line 8, Column A)	1	
2	Enter 85% of line 1	2	
3	Minimum asset amount for prior year (from Section B, line 8, Column A)	3	
4	Enter greater of line 2 or line 3	4	
5	Income tax imposed in prior year	5	
6	<b>Distributable Amount.</b> Subtract line 5 from line 4, unless subject to emergency temporary reduction (see instructions)	6	

7  Check here if the current year is the organization's first as a non-functionally-integrated Type III supporting organization (see instructions).

**Part V Type III Non-Functionally Integrated 509(a)(3) Supporting Organizations** (continued)

Section D - Distributions	Current Year
1 Amounts paid to supported organizations to accomplish exempt purposes	
2 Amounts paid to perform activity that directly furthers exempt purposes of supported organizations, in excess of income from activity	
3 Administrative expenses paid to accomplish exempt purposes of supported organizations	
4 Amounts paid to acquire exempt-use assets	
5 Qualified set-aside amounts (prior IRS approval required)	
6 Other distributions (describe in Part VI). See instructions.	
7 <b>Total annual distributions.</b> Add lines 1 through 6.	
8 Distributions to attentive supported organizations to which the organization is responsive (provide details in Part VI). See instructions.	
9 Distributable amount for 2014 from Section C, line 6	
10 Line 8 amount divided by Line 9 amount	

Section E - Distribution Allocations (see instructions)	(i) Excess Distributions	(ii) Underdistributions Pre-2014	(iii) Distributable Amount for 2014
1 Distributable amount for 2014 from Section C, line 6			
2 Underdistributions, if any, for years prior to 2014 (reasonable cause required-see instructions)			
3 Excess distributions carryover, if any, to 2014:			
a			
b			
c			
d			
e From 2013 . . . . .			
f <b>Total of lines 3a through e</b>			
g Applied to underdistributions of prior years			
h Applied to 2014 distributable amount			
i Carryover from 2009 not applied (see instructions)			
j <b>Remainder. Subtract lines 3g, 3h, and 3i from 3f.</b>			
4 Distributions for 2014 from Section D, line 7: \$			
a Applied to underdistributions of prior years			
b Applied to 2014 distributable amount			
c <b>Remainder. Subtract lines 4a and 4b from 4.</b>			
5 Remaining underdistributions for years prior to 2014, if any. Subtract lines 3g and 4a from line 2 (if amount greater than zero, see instructions).			
6 Remaining underdistributions for 2014. Subtract lines 3h and 4b from line 1 (if amount greater than zero, see instructions).			
7 <b>Excess distributions carryover to 2015. Add lines 3j and 4c.</b>			
8 Breakdown of line 7:			
a			
b			
c			
d Excess from 2013 . . .			
e Excess from 2014 . . .			



**Schedule B**  
(Form 990, 990-EZ,  
or 990-PF)  
Department of the Treasury  
Internal Revenue Service

### Schedule of Contributors

OMB No. 1545-0047

# 2014

▶ Attach to Form 990, Form 990-EZ, or Form 990-PF.

▶ Information about Schedule B (Form 990, 990-EZ, 990-PF) and its instructions is at [www.irs.gov/form990](http://www.irs.gov/form990).

Name of the organization <b>YORK TECHNICAL COLLEGE FOUNDATION, INC.</b>	Employer identification number <b>57-0756721</b>
--	---

Organization type (check one):

Filers of:

Section:

Form 990 or 990-EZ

501(c)( 3 ) (enter number) organization

4947(a)(1) nonexempt charitable trust not treated as a private foundation

527 political organization

Form 990-PF

501(c)(3) exempt private foundation

4947(a)(1) nonexempt charitable trust treated as a private foundation

501(c)(3) taxable private foundation

Check if your organization is covered by the **General Rule** or a **Special Rule**.

**Note.** Only a section 501(c)(7), (8), or (10) organization can check boxes for both the General Rule and a Special Rule. See instructions.

#### General Rule

For an organization filing Form 990, 990-EZ, or 990-PF that received, during the year, contributions totaling \$5,000 or more (in money or property) from any one contributor. Complete Parts I and II. See instructions for determining a contributor's total contributions.

#### Special Rules

For an organization described in section 501(c)(3) filing Form 990 or 990-EZ that met the 33<sup>1</sup>/<sub>3</sub> % support test of the regulations under sections 509(a)(1) and 170(b)(1)(A)(vi), that checked Schedule A (Form 990 or 990-EZ), Part II, line 13, 16a, or 16b, and that received from any one contributor, during the year, total contributions of the greater of (1) \$5,000 or (2) 2% of the amount on (i) Form 990, Part VIII, line 1h, or (ii) Form 990-EZ, line 1. Complete Parts I and II.

For an organization described in section 501(c)(7), (8), or (10) filing Form 990 or 990-EZ that received from any one contributor, during the year, total contributions of more than \$1,000 exclusively for religious, charitable, scientific, literary, or educational purposes, or for the prevention of cruelty to children or animals. Complete Parts I, II, and III.

For an organization described in section 501(c)(7), (8), or (10) filing Form 990 or 990-EZ that received from any one contributor, during the year, contributions exclusively for religious, charitable, etc., purposes, but no such contributions totaled more than \$1,000. If this box is checked, enter here the total contributions that were received during the year for an exclusively religious, charitable, etc., purpose. Do not complete any of the parts unless the **General Rule** applies to this organization because it received nonexclusively religious, charitable, etc., contributions totaling \$5,000 or more during the year ..... ▶ \$ .....

**Caution.** An organization that is not covered by the General Rule and/or the Special Rules does not file Schedule B (Form 990, 990-EZ, or 990-PF), but it must answer "No" on Part IV, line 2, of its Form 990; or check the box on line H of its Form 990-EZ or on its Form 990-PF, Part I, line 2, to certify that it does not meet the filing requirements of Schedule B (Form 990, 990-EZ, or 990-PF).

Name of organization

YORK TECHNICAL COLLEGE FOUNDATION,

Employer identification number

57-0756721

**Part I** Contributors (see instructions). Use duplicate copies of Part I if additional space is needed.

(a) No.	(b) Name, address, and ZIP + 4	(c) Total contributions	(d) Type of contribution
1	CHESTER HEALTHCARE FOUNDATION POST OFFICE BOX 249 CHESTER SC 29706	\$ 25,000	Person <input checked="" type="checkbox"/> Payroll <input type="checkbox"/> Noncash <input type="checkbox"/> (Complete Part II for noncash contributions.)
2	HOPEWELL FOUNDATION POST OFFICE BOX 470 ROCK HILL SC 29731	\$ 25,000	Person <input checked="" type="checkbox"/> Payroll <input type="checkbox"/> Noncash <input type="checkbox"/> (Complete Part II for noncash contributions.)
3	AMP AGENCY INC 777 NORTH WASHINGTON STREET, INC BOSTON MA 02114	\$ 5,000	Person <input checked="" type="checkbox"/> Payroll <input type="checkbox"/> Noncash <input type="checkbox"/> (Complete Part II for noncash contributions.)
4	BARNES AND NOBLE 120 MOUNTAIN VIEW BLVD BASKING RIDGE NJ 07920	\$ 5,000	Person <input checked="" type="checkbox"/> Payroll <input type="checkbox"/> Noncash <input type="checkbox"/> (Complete Part II for noncash contributions.)
5	BLUE CROSS BLUE SHIELD OF SC I-20 @ ALPINE ROAD, MC AX-234 COLUMBIA SC 29219	\$ 27,150	Person <input checked="" type="checkbox"/> Payroll <input type="checkbox"/> Noncash <input type="checkbox"/> (Complete Part II for noncash contributions.)
6	THE CHESTER FOUNDATION POST OFFICE BOX 832 CHESTER SC 29706	\$ 200,000	Person <input checked="" type="checkbox"/> Payroll <input type="checkbox"/> Noncash <input type="checkbox"/> (Complete Part II for noncash contributions.)

Name of organization <b>YORK TECHNICAL COLLEGE FOUNDATION,</b>	Employer identification number <b>57-0756721</b>
---	---

**Part I** Contributors (see instructions). Use duplicate copies of Part I if additional space is needed.

(a) No.	(b) Name, address, and ZIP + 4	(c) Total contributions	(d) Type of contribution
7	FAMILY TRUST FEDERAL CREDIT UNION POST OFFICE BOX 10233 ROCK HILL SC 29731	\$ 10,000	Person <input checked="" type="checkbox"/> Payroll <input type="checkbox"/> Noncash <input type="checkbox"/> (Complete Part II for noncash contributions.)
8	FIRST CITIZENS BANK 126 GADSDEN STREET CHESTER SC 29706	\$ 6,000	Person <input checked="" type="checkbox"/> Payroll <input type="checkbox"/> Noncash <input type="checkbox"/> (Complete Part II for noncash contributions.)
9	HARRY M. MILLER 1422 WELLS COURT ROCK HILL SC 29732	\$ 11,000	Person <input checked="" type="checkbox"/> Payroll <input type="checkbox"/> Noncash <input type="checkbox"/> (Complete Part II for noncash contributions.)
10	GREGORY F. RUTHERFORD 1289 PINWOOD ROAD ROCK HILL SC 29730	\$ 10,100	Person <input checked="" type="checkbox"/> Payroll <input type="checkbox"/> Noncash <input type="checkbox"/> (Complete Part II for noncash contributions.)
11	TENET HEALTHCARE CORPORATION POST OFFICE BOX 809074 DALLAS TX 75380-9074	\$ 20,000	Person <input checked="" type="checkbox"/> Payroll <input type="checkbox"/> Noncash <input type="checkbox"/> (Complete Part II for noncash contributions.)
12	YORK ELECTRIC COOPERATIVE INC POST OFFICE BOX 150 YORK SC 29745	\$ 60,000	Person <input checked="" type="checkbox"/> Payroll <input type="checkbox"/> Noncash <input type="checkbox"/> (Complete Part II for noncash contributions.)



SCHEDULE D (Form 990)

Supplemental Financial Statements
Complete if the organization answered "Yes" to Form 990, Part IV, line 6, 7, 8, 9, 10, 11a, 11b, 11c, 11d, 11e, 11f, 12a, or 12b. Attach to Form 990.

OMB No. 1545-0047
2014
Open to Public Inspection

Department of the Treasury Internal Revenue Service

Information about Schedule D (Form 990) and its instructions is at www.irs.gov/form990.

Name of the organization
YORK TECHNICAL COLLEGE FOUNDATION, INC.

Employer identification number
57-0756721

Part I Organizations Maintaining Donor Advised Funds or Other Similar Funds or Accounts. Complete if the organization answered "Yes" to Form 990, Part IV, line 6.

Table with 2 columns: (a) Donor advised funds, (b) Funds and other accounts. Rows include: Total number at end of year, Aggregate value of contributions to (during year), Aggregate value of grants from (during year), Aggregate value at end of year, and two questions about donor informed consent.

Part II Conservation Easements. Complete if the organization answered "Yes" to Form 990, Part IV, line 7.

Form with multiple sections: Purpose(s) of conservation easements (checkboxes for public use, natural habitat, open space, historic area, historic structure), lines 2a-2d (table for easement details), and questions 3-9 regarding monitoring, expenses, and reporting.

Part III Organizations Maintaining Collections of Art, Historical Treasures, or Other Similar Assets. Complete if the organization answered "Yes" to Form 990, Part IV, line 8.

Form with questions 1a, 1b, and 2 regarding reporting of art and historical treasures, including revenue and asset amounts.

**Part III Organizations Maintaining Collections of Art, Historical Treasures, or Other Similar Assets (continued)**

- 3 Using the organization's acquisition, accession, and other records, check any of the following that are a significant use of its collection items (check all that apply):
- a  Public exhibition
  - b  Scholarly research
  - c  Preservation for future generations
  - d  Loan or exchange programs
  - e  Other .....
- 4 Provide a description of the organization's collections and explain how they further the organization's exempt purpose in Part XIII.
- 5 During the year, did the organization solicit or receive donations of art, historical treasures, or other similar assets to be sold to raise funds rather than to be maintained as part of the organization's collection?  Yes  No

**Part IV Escrow and Custodial Arrangements.**

Complete if the organization answered "Yes" to Form 990, Part IV, line 9, or reported an amount on Form 990, Part X, line 21.

- 1a Is the organization an agent, trustee, custodian or other intermediary for contributions or other assets not included on Form 990, Part X?  Yes  No
- b If "Yes," explain the arrangement in Part XIII and complete the following table:
- |  | Amount |
|--|--------|
| 1c Beginning balance .....             |        |
| 1d Additions during the year .....     |        |
| 1e Distributions during the year ..... |        |
| 1f Ending balance .....                |        |
- 2a Did the organization include an amount on Form 990, Part X, line 21, for escrow or custodial account liability?  Yes  No
- b If "Yes," explain the arrangement in Part XIII. Check here if the explanation has been provided in Part XIII

**Part V Endowment Funds.**

Complete if the organization answered "Yes" to Form 990, Part IV, line 10.

	(a) Current year	(b) Prior year	(c) Two years back	(d) Three years back	(e) Four years back
1a Beginning of year balance .....	3,416,109	3,355,020	3,170,047	3,116,921	2,695,400
b Contributions .....	27,004	61,089	28,358	52,869	263,476
c Net investment earnings, gains, and losses .....				257	158,045
d Grants or scholarships .....					
e Other expenditures for facilities and programs .....			156,615		
f Administrative expenses .....					
g End of year balance .....	3,443,113	3,416,109	3,355,020	3,170,047	3,116,921

- 2 Provide the estimated percentage of the current year end balance (line 1g, column (a)) held as:
- a Board designated or quasi-endowment ▶ ..... %
  - b Permanent endowment ▶ 100.00 %
  - c Temporarily restricted endowment ▶ ..... %
- The percentages in lines 2a, 2b, and 2c should equal 100%.
- 3a Are there endowment funds not in the possession of the organization that are held and administered for the organization by:
- |   | Yes | No |
|---|-----|----|
| (i) unrelated organizations .....   |     | X  |
| (ii) related organizations .....  |     | X  |
| b If "Yes" to 3a(ii), are the related organizations listed as required on Schedule R? ..... |     |    |
- 4 Describe in Part XIII the intended uses of the organization's endowment funds.

**Part VI Land, Buildings, and Equipment.**

Complete if the organization answered "Yes" to Form 990, Part IV, line 11a. See Form 990, Part X, line 10.

Description of property	(a) Cost or other basis (investment)	(b) Cost or other basis (other)	(c) Accumulated depreciation	(d) Book value
1a Land .....		597,899		597,899
b Buildings .....		658,478	237,564	420,914
c Leasehold improvements .....				
d Equipment .....				
e Other .....		28,000	25,200	2,800
<b>Total.</b> Add lines 1a through 1e. (Column (d) must equal Form 990, Part X, column (B), line 10c.) .....				1,021,613

**Part VII Investments—Other Securities.**

Complete if the organization answered "Yes" to Form 990, Part IV, line 11b. See Form 990, Part X, line 12.

(a) Description of security or category (including name of security)	(b) Book value	(c) Method of valuation: Cost or end-of-year market value
(1) Financial derivatives		
(2) Closely-held equity interests		
(3) Other		
(A)		
(B)		
(C)		
(D)		
(E)		
(F)		
(G)		
(H)		
<b>Total.</b> (Column (b) must equal Form 990, Part X, col. (B) line 12.) ▶		

**Part VIII Investments—Program Related.**

Complete if the organization answered "Yes" to Form 990, Part IV, line 11c. See Form 990, Part X, line 13.

(a) Description of investment	(b) Book value	(c) Method of valuation: Cost or end-of-year market value
(1)		
(2)		
(3)		
(4)		
(5)		
(6)		
(7)		
(8)		
(9)		
<b>Total.</b> (Column (b) must equal Form 990, Part X, col. (B) line 13.) ▶		

**Part IX Other Assets.**

Complete if the organization answered "Yes" to Form 990, Part IV, line 11d. See Form 990, Part X, line 15.

(a) Description	(b) Book value
(1)	
(2)	
(3)	
(4)	
(5)	
(6)	
(7)	
(8)	
(9)	
<b>Total.</b> (Column (b) must equal Form 990, Part X, col. (B) line 15.) ▶	

**Part X Other Liabilities.**

Complete if the organization answered "Yes" to Form 990, Part IV, line 11e or 11f. See Form 990, Part X, line 25.

1. (a) Description of liability	(b) Book value
(1) Federal income taxes	
(2)	
(3)	
(4)	
(5)	
(6)	
(7)	
(8)	
(9)	
<b>Total.</b> (Column (b) must equal Form 990, Part X, col. (B) line 25.) ▶	

2. Liability for uncertain tax positions. In Part XIII, provide the text of the footnote to the organization's financial statements that reports the organization's liability for uncertain tax positions under FIN 48 (ASC 740). Check here if the text of the footnote has been provided in Part XIII

**Part XI Reconciliation of Revenue per Audited Financial Statements With Revenue per Return.**

Complete if the organization answered "Yes" to Form 990, Part IV, line 12a.

1	Total revenue, gains, and other support per audited financial statements		1	2,037,704
2	Amounts included on line 1 but not on Form 990, Part VIII, line 12:			
a	Net unrealized gains (losses) on investments	2a	-265,012	
b	Donated services and use of facilities	2b		
c	Recoveries of prior year grants	2c		
d	Other (Describe in Part XIII.)	2d		
e	Add lines 2a through 2d	2e	-265,012	
3	Subtract line 2e from line 1	3	2,302,716	
4	Amounts included on Form 990, Part VIII, line 12, but not on line 1:			
a	Investment expenses not included on Form 990, Part VIII, line 7b	4a		
b	Other (Describe in Part XIII.)	4b		
c	Add lines 4a and 4b	4c		
5	Total revenue. Add lines 3 and 4c. (This must equal Form 990, Part I, line 12.)	5	2,302,716	

**Part XII Reconciliation of Expenses per Audited Financial Statements With Expenses per Return.**

Complete if the organization answered "Yes" to Form 990, Part IV, line 12a.

1	Total expenses and losses per audited financial statements		1	332,869
2	Amounts included on line 1 but not on Form 990, Part IX, line 25:			
a	Donated services and use of facilities	2a		
b	Prior year adjustments	2b		
c	Other losses	2c		
d	Other (Describe in Part XIII.)	2d		
e	Add lines 2a through 2d	2e		
3	Subtract line 2e from line 1	3	332,869	
4	Amounts included on Form 990, Part IX, line 25, but not on line 1:			
a	Investment expenses not included on Form 990, Part VIII, line 7b	4a		
b	Other (Describe in Part XIII.)	4b		
c	Add lines 4a and 4b	4c		
5	Total expenses. Add lines 3 and 4c. (This must equal Form 990, Part I, line 18.)	5	332,869	

**Part XIII Supplemental Information.**

Provide the descriptions required for Part II, lines 3, 5, and 9; Part III, lines 1a and 4; Part IV, lines 1b and 2b; Part V, line 4; Part X, line 2; Part XI, lines 2d and 4b; and Part XII, lines 2d and 4b. Also complete this part to provide any additional information.

**PART V, LINE 4 - INTENDED USES FOR ENDOWMENT FUNDS**

THE ENDOWMENT FUNDS ARE TO BE USED TO FURTHER THE YORK TECHNICAL COLLEGE FOUNDATION'S PURPOSE.

**Part XIII** Supplemental Information (continued)

Area with horizontal dotted lines for supplemental information.

**SCHEDULE G  
(Form 990 or 990-EZ)**

**Supplemental Information Regarding Fundraising or Gaming Activities**

OMB No. 1545-0047

**2014**

Department of the Treasury  
Internal Revenue Service

Complete if the organization answered "Yes" to Form 990, Part IV, lines 17, 18, or 19, or if the organization entered more than \$15,000 on Form 990-EZ, line 6a.

▶ Attach to Form 990 or Form 990-EZ.

▶ Information about Schedule G (Form 990 or 990-EZ) and its instructions is at [www.irs.gov/form990](http://www.irs.gov/form990).

Open to Public Inspection

Name of the organization

**YORK TECHNICAL COLLEGE FOUNDATION,  
INC.**

Employer identification number

**57-0756721**

**Part I**

**Fundraising Activities.** Complete if the organization answered "Yes" to Form 990, Part IV, line 17. Form 990-EZ filers are not required to complete this part.

1 Indicate whether the organization raised funds through any of the following activities. Check all that apply.

- a  Mail solicitations
- b  Internet and email solicitations
- c  Phone solicitations
- d  In-person solicitations
- e  Solicitation of non-government grants
- f  Solicitation of government grants
- g  Special fundraising events

2a Did the organization have a written or oral agreement with any individual (including officers, directors, trustees or key employees listed in Form 990, Part VII) or entity in connection with professional fundraising services?  Yes  No

b If "Yes," list the ten highest paid individuals or entities (fundraisers) pursuant to agreements under which the fundraiser is to be compensated at least \$5,000 by the organization.

(i) Name and address of individual or entity (fundraiser)	(ii) Activity	(iii) Did fundraiser have custody or control of contributions?		(iv) Gross receipts from activity	(v) Amount paid to (or retained by) fundraiser listed in col. (i)	(vi) Amount paid to (or retained by) organization
		Yes	No			
CAPITAL DEVELOPMENT SERVICES 1 633 W. 4TH STREET, SUITE 202 WINSTON-SALEM NC 27101	STRATEGY		X	0	34,019	0
2						
3						
4						
5						
6						
7						
8						
9						
10						
<b>Total</b>					<b>34,019</b>	

3 List all states in which the organization is registered or licensed to solicit contributions or has been notified it is exempt from registration or licensing.

**Part II Fundraising Events.** Complete if the organization answered "Yes" to Form 990, Part IV, line 18, or reported more than \$15,000 of fundraising event contributions and gross income on Form 990-EZ, lines 1 and 6b. List events with gross receipts greater than \$5,000.

Revenue		(a) Event #1	(b) Event #2	(c) Other events	(d) Total events
		(event type)	(event type)	(total number)	(add col. (a) through col. (c))
Revenue	1	Gross receipts			
	2	Less: Contributions			
	3	Gross income (line 1 minus line 2)			
Direct Expenses	4	Cash prizes			
	5	Noncash prizes			
	6	Rent/facility costs			
	7	Food and beverages			
	8	Entertainment			
	9	Other direct expenses			
	10	Direct expense summary. Add lines 4 through 9 in column (d)			
11	Net income summary. Subtract line 10 from line 3, column (d)				

**Part III Gaming.** Complete if the organization answered "Yes" to Form 990, Part IV, line 19, or reported more than \$15,000 on Form 990-EZ, line 6a.

Revenue		(a) Bingo	(b) Pull tabs/instant bingo/progressive bingo	(c) Other gaming	(d) Total gaming (add col. (a) through col. (c))
		1	Gross revenue		
Direct Expenses	2	Cash prizes			
	3	Noncash prizes			
	4	Rent/facility costs			
	5	Other direct expenses			
	6	Volunteer labor	<input type="checkbox"/> Yes ..... % <input type="checkbox"/> No	<input type="checkbox"/> Yes ..... % <input type="checkbox"/> No	<input type="checkbox"/> Yes ..... % <input type="checkbox"/> No
7	Direct expense summary. Add lines 2 through 5 in column (d)				
8	Net gaming income summary. Subtract line 7 from line 1, column (d)				

9 Enter the state(s) in which the organization conducts gaming activities: \_\_\_\_\_  Yes  No  
 a Is the organization licensed to conduct gaming activities in each of these states?  Yes  No  
 b If "No," explain: \_\_\_\_\_

10a Were any of the organization's gaming licenses revoked, suspended or terminated during the tax year?  Yes  No  
 b If "Yes," explain: \_\_\_\_\_





SCHEDULE I (Form 990)

Grants and Other Assistance to Organizations, Governments, and Individuals in the United States

OMB No. 1545-0047 2014 Open to Public Inspection

Department of the Treasury Internal Revenue Service

Name of the organization

YORK TECHNICAL COLLEGE FOUNDATION, INC.

Employer identification number 57-0756721

Part I General Information on Grants and Assistance

1 Does the organization maintain records to substantiate the amount of the grants or assistance, the grantees' eligibility for the grants or assistance, and the selection criteria used to award the grants or assistance?
2 Describe in Part IV the organization's procedures for monitoring the use of grant funds in the United States.

Part II Grants and Other Assistance to Domestic Organizations and Domestic Governments. Complete if the organization answered "Yes" to Form 990, Part IV, line 21, for any recipient that received more than \$5,000. Part II can be duplicated if additional space is needed.

Table with 8 columns: (a) Name and address of organization or government, (b) EIN, (c) IRC section if applicable, (d) Amount of cash grant, (e) Amount of non-cash assistance, (f) Method of valuation, (g) Description of non-cash assistance, (h) Purpose of grant or assistance. Includes entry for YORK TECHNICAL COLLEGE.

2 Enter total number of section 501(c)(3) and government organizations listed in the line 1 table
3 Enter total number of other organizations listed in the line 1 table

Schedule I (Form 990) (2014) **YORK TECHNICAL COLLEGE FOUNDATION, 57-0756721**  
**Part II** Grants and Other Assistance to Domestic Individuals. Complete if the organization answered "Yes" to Form 990, Part IV, line 22.  
 Part III can be duplicated if additional space is needed.

(a) Type of grant or assistance	(b) Number of recipients	(c) Amount of cash grant	(d) Amount of non-cash assistance	(e) Method of valuation (book, FMV, appraisal, other)	(f) Description of non-cash assistance
1 SCHOLARSHIPS	230	100,880			
2					
3					
4					
5					
6					
7					

**Part IV** Supplemental Information. Provide the information required in Part I, line 2, Part III, column (b), and any other additional information.

PART I, LINE 2 - PROCEDURES FOR MONITORING THE USE OF GRANT FUNDS  
 YORK TECHNICAL COLLEGE FOUNDATION ACTS ONLY AS THE FISCAL AGENT FOR GRANT AWARDS TO YORK TECHNICAL COLLEGE. FUNDS ARE RECEIVED BY THE FOUNDATION AND THE COLLEGE MUST SUBMIT A DETAILED BILLING TO THE FOUNDATION FOR PAYMENT. COPIES OF ALL GRANTS ARE MAINTAINED IN THE FOUNDATION OFFICE. THE FOUNDATION DOES NOT AWARD GRANT FUNDS SO THEREFORE DOES NOT DETERMINE ELIGIBILITY.  
 THE FOUNDATION DOES NOT DETERMINE ELIGIBILITY OF STUDENTS FOR SCHOLARSHIPS OR GRANTS, THAT IS HANDLED BY THE FINANCIAL AID OFFICE OF THE COLLEGE. THE FOUNDATION ISSUES THESE FUNDS TO COLLEGE BASED ON INFORMATION PROVIDED BY

Schedule I (Form 990) (2014) **YORK TECHNICAL COLLEGE FOUNDATION, 57-0756721**

**Part III** Grants and Other Assistance to Domestic Individuals. Complete if the organization answered "Yes" to Form 990, Part IV, line 22.

Part III can be duplicated if additional space is needed.

(a) Type of grant or assistance	(b) Number of recipients	(c) Amount of cash grant	(d) Amount of non-cash assistance	(e) Method of valuation (book, FMV, appraisal, other)	(f) Description of non-cash assistance
1					
2					
3					
4					
5					
6					
7					

**Part IV** Supplemental Information. Provide the information required in Part I, line 2, Part III, column (b), and any other additional information.

THE FINANCIAL AID OFFICE. THE COLLEGE ALSO SUBMITS DETAILED INVOICES TO

THE FOUNDATION FOR REIMBURSEMENT OF THESE FUNDS.

SCHEDULE J (Form 990)

Compensation Information

For certain Officers, Directors, Trustees, Key Employees, and Highest Compensated Employees

Complete if the organization answered "Yes" on Form 990, Part IV, line 23. Attach to Form 990.

Information about Schedule J (Form 990) and its instructions is at www.irs.gov/form990.

OMB No. 1545-0047

2014

Open to Public Inspection

Department of the Treasury Internal Revenue Service

Name of the organization

YORK TECHNICAL COLLEGE FOUNDATION, INC.

Employer identification number

57-0756721

Part I Questions Regarding Compensation

1a Check the appropriate box(es) if the organization provided any of the following to or for a person listed in Form 990, Part VII, Section A, line 1a. Complete Part III to provide any relevant information regarding these items.

- First-class or charter travel, Travel for companions, Tax indemnification and gross-up payments, Discretionary spending account, Housing allowance or residence for personal use, Payments for business use of personal residence, Health or social club dues or initiation fees, Personal services (e.g., maid, chauffeur, chef)

b If any of the boxes on line 1a are checked, did the organization follow a written policy regarding payment or reimbursement or provision of all of the expenses described above? If "No," complete Part III to explain

2 Did the organization require substantiation prior to reimbursing or allowing expenses incurred by all directors, trustees, and officers, including the CEO/Executive Director, regarding the items checked in line 1a?

3 Indicate which, if any, of the following the filing organization uses to establish the compensation of the organization's CEO/Executive Director. Check all that apply. Do not check any boxes for methods used by a related organization to establish compensation of the CEO/Executive Director, but explain in Part III.

- Compensation committee, Independent compensation consultant, Form 990 of other organizations, Written employment contract, Compensation survey or study, Approval by the board or compensation committee

4 During the year, did any person listed in Form 990, Part VII, Section A, line 1a, with respect to the filing organization or a related organization:

- a Receive a severance payment or change-of-control payment?
b Participate in, or receive payment from, a supplemental nonqualified retirement plan?
c Participate in, or receive payment from, an equity-based compensation arrangement?

If "Yes" to any of lines 4a-c, list the persons and provide the applicable amounts for each item in Part III.

Only section 501(c)(3), 501(c)(4), and 501(c)(29) organizations must complete lines 5-9.

5 For persons listed in Form 990, Part VII, Section A, line 1a, did the organization pay or accrue any compensation contingent on the revenues of:

- a The organization?
b Any related organization?

If "Yes" to line 5a or 5b, describe in Part III.

6 For persons listed in Form 990, Part VII, Section A, line 1a, did the organization pay or accrue any compensation contingent on the net earnings of:

- a The organization?
b Any related organization?

If "Yes" to line 6a or 6b, describe in Part III.

7 For persons listed in Form 990, Part VII, Section A, line 1a, did the organization provide any non-fixed payments not described in lines 5 and 6? If "Yes," describe in Part III

8 Were any amounts reported in Form 990, Part VII, paid or accrued pursuant to a contract that was subject to the initial contract exception described in Regulations section 53.4958-4(a)(3)? If "Yes," describe in Part III

9 If "Yes" to line 8, did the organization also follow the rebuttable presumption procedure described in Regulations section 53.4958-6(c)?

Table with 3 columns: Question ID, Yes, No. Rows 1a-9 with 'X' marks in Yes/No columns.

Schedule J (Form 990) 2014 **YORK TECHNICAL COLLEGE FOUNDATION, 57-0756721**

**Part I Officers, Directors, Trustees, Key Employees, and Highest Compensated Employees.** Use duplicate copies if additional space is needed.

For each individual whose compensation must be reported in Schedule J, report compensation from the organization on row (i) and from related organizations, described in the instructions, on row (ii). Do not list any individuals that are not listed on Form 990, Part VII.

Note. The sum of columns (B)(i)-(iii) for each listed individual must equal the total amount of Form 990, Part VII, Section A, line 1a, applicable column (D) and (E) amounts for that individual.

	(A) Name and Title	(B) Breakdown of W-2 and/or 1099-MISC compensation			(C) Retirement and other deferred compensation	(D) Nontaxable benefits	(E) Total of columns (B)(i)-(D)	(F) Compensation in column (B) reported as deferred in prior Form 990
		(i) Base compensation	(ii) Bonus & incentive compensation	(iii) Other reportable compensation				
1	GREG RUTHERFORD PRESIDENT YTC	50,000	0	0	0	0	50,000	0
2							141,882	0
3								
4								
5								
6								
7								
8								
9								
10								
11								
12								
13								
14								
15								
16								

Schedule J (Form 990) 2014 YORK TECHNICAL COLLEGE FOUNDATION, 57-0756721

**Part III** Supplemental Information

Provide the information, explanation, or descriptions required for Part I, lines 1a, 1b, 3, 4a, 4b, 4c, 5a, 5b, 6a, 6b, 7, and 8, and for Part II. Also complete this part for any additional information.

Area with horizontal dotted lines for supplemental information.

**SCHEDULE O**  
(Form 990 or 990-EZ)

**Supplemental Information to Form 990 or 990-EZ**

OMB No. 1545-0047

Complete to provide information for responses to specific questions on  
Form 990 or 990-EZ or to provide any additional information.

**2014**

Department of the Treasury  
Internal Revenue Service

▶ Attach to Form 990 or 990-EZ.

▶ Information about Schedule O (Form 990 or 990-EZ) and its instructions is at [www.irs.gov/form990](http://www.irs.gov/form990).

Open to Public  
Inspection

Name of the organization

**YORK TECHNICAL COLLEGE FOUNDATION,  
INC.**

Employer identification number

**57-0756721**

**FORM 990 - ORGANIZATION'S MISSION**

TO RECEIVE PRIVATE GIFTS, BEQUESTS, AND DONATIONS, AND TO ACCOUNT FOR,  
MANAGE AND HELP APPRECIATE MONIES OR PROPERTY SUBMITTED TO THE FOUNDATION  
TO BENEFIT AND ADVANCE YORK TECHNICAL COLLEGE BY SUPPORTING PROGRAMS AND  
ACTIVITIES OF THE COLLEGE.

**FORM 990, PART VI, LINE 6 - CLASSES OF MEMBERS OR STOCKHOLDERS**

THE FOUNDATION HAS A BOARD CONSISTING OF 17 MEMBERS.

**FORM 990, PART VI, LINE 7A - ELECTION OF MEMBERS AND THEIR RIGHTS**

ALL FOUNDATION BOARD MEMBERS ARE VOTING MEMBERS. PER FOUNDATION BY-LAWS,  
THE BOARD OF DIRECTORS IS AUTHORIZED TO FILL VACANCIES OR TO ADD MEMBERS OF  
THE BOARD UP TO A MAXIMUM OF THIRTY PERSONS AT ANY REGULAR OR CALLED  
MEETING OF THE BOARD.

**FORM 990, PART VI, LINE 7B - DECISIONS SUBJECT TO APPROVAL OF MEMBERS**

THE AFFAIRS OF THE FOUNDATION ARE MANAGED BY ITS BOARD OF DIRECTORS.

**FORM 990, PART VI, LINE 11B - ORGANIZATION'S PROCESS TO REVIEW FORM 990**

THE FORM 990 AND ALL SCHEDULES ARE EITHER PRESENTED AT FULL BOARD MEETING,  
SENT EITHER ELECTRONICALLY OR BY MAIL TO ALL BOARD MEMBERS FOR REVIEW.  
MEMBERS CAN EMAIL, PHONE, OR BRING THEIR QUESTIONS TO THE NEXT BOARD  
MEETING BEFORE THE FORM IS SUBMITTED.

**FORM 990, PART VI, LINE 12C - ENFORCEMENT OF CONFLICTS POLICY**

Name of the organization

Employer identification number

YORK TECHNICAL COLLEGE FOUNDATION,

57-0756721

CONFLICTS OF INTEREST FORMS ARE MAINTAINED IN THE FOUNDATION OFFICE AND ARE  
UPDATED ANNUALLY BEFORE THE END OF FOUNDATION'S FISCAL YEAR. THEY ARE SENT  
ELECTRONICALLY OR BY MAIL TO EACH BOARD MEMBER. EACH STATEMENT IS REVIEWED  
FOR ACCURACY BY THE EXECUTIVE DIRECTOR AND STAFF.

FORM 990, PART VI, LINE 19 - GOVERNING DOCUMENTS DISCLOSURE EXPLANATION  
GOVERNING DOCUMENTS, CONFLICT OF INTEREST POLICY, AND FINANCIAL STATEMENTS  
ARE AVAILABLE TO PUBLIC UPON REQUEST. THE FOUNDATION FINANCIAL STATEMENTS  
ARE ALSO INCORPORATED INTO THE YORK TECHNICAL COLLEGE'S COMPREHENSIVE  
ANNUAL FINANCIAL REPORTM WHICH IS A PUBLIC DOCUMENT.



**SCHEDULE R  
(Form 990)**

**Related Organizations and Unrelated Partnerships**

▶ Complete if the organization answered "Yes" on Form 990, Part IV, line 33, 34, 35b, 36, or 37.  
▶ Attach to Form 990.  
▶ Information about Schedule R (Form 990) and its instructions is at [www.irs.gov/form990](http://www.irs.gov/form990).

**2014**

**Open to Public Inspection**

Department of the Treasury  
Internal Revenue Service

Name of the organization  
**YORK TECHNICAL COLLEGE FOUNDATION,  
INC.**

Employer identification number  
**57-0756721**

**Part I Identification of Disregarded Entities** Complete if the organization answered "Yes" on Form 990, Part IV, line 33.

(1)	(a) Name, address, and EIN (if applicable) of disregarded entity	(b) Primary activity	(c) Legal domicile (state or foreign country)	(d) Total income	(e) End-of-year assets	(f) Direct controlling entity
(1)						
(2)						
(3)						
(4)						
(5)						

**Part II Identification of Related Tax-Exempt Organizations** Complete if the organization answered "Yes" on Form 990, Part IV, line 34 because it had one or more related tax-exempt organizations during the tax year.

(1)	(a) Name, address, and EIN of related organization	(b) Primary activity	(c) Legal domicile (state or foreign country)	(d) Exempt Code section	(e) Public charity status (if section 501(c)(3))	(f) Direct controlling entity	(g) Section 512(b)(13) controlled entity?	
							Yes	No
(1)	<b>YORK TECHNICAL COLLEGE</b> 452 S. ANDERSON ROAD ROCK HILL SC 29730 57-6024198	<b>EDUCATION</b>	<b>SC</b>	<b>501</b>	<b>2</b>	<b>N/A</b>		<b>X</b>
(2)								
(3)								
(4)								
(5)								

Part III Identification of Related Organizations Taxable as a Partnership Complete if the organization answered "Yes" on Form 990, Part IV, line 34 because it had one or more related organizations treated as a partnership during the tax year.

	(a) Name, address, and EIN of related organization	(b) Primary activity	(c) Legal domicile (state or foreign country)	(d) Direct controlling entity	(e) Predominant income (related, unrelated, excluded from tax under sections 512-514)	(f) Share of total income	(g) Share of end-of-year assets	(h) Disproportionate alloc.?		(i) Code V-UBI amount in box 20 of Schedule K-1 (Form 1065)	(j) General or managing partner?		(k) Percentage ownership
								Yes	No		Yes	No	
(1)													
(2)													
(3)													
(4)													

Part IV Identification of Related Organizations Taxable as a Corporation or Trust Complete if the organization answered "Yes" on Form 990, Part IV, line 34 because it had one or more related organizations treated as a corporation or trust during the tax year.

	(a) Name, address, and EIN of related organization	(b) Primary activity	(c) Legal domicile (state or foreign country)	(d) Direct controlling entity	(e) Type of entity (C corp, S corp, or trust)	(f) Share of total income	(g) Share of end-of-year assets	(h) Percentage ownership	(i) Section 512(b)(13) controlled entity?	
									Yes	No
(1)										
(2)										
(3)										
(4)										

**Part V Transactions With Related Organizations** Complete if the organization answered "Yes" on Form 990, Part IV, line 34, 35b, or 36.

Note. Complete line 1 if any entity is listed in Parts II, III, or IV of this schedule.

1 During the tax year, did the organization engage in any of the following transactions with one or more related organizations listed in Parts II-IV?

	Yes	No
a Receipt of (i) interest, (ii) annuities, (iii) royalties, or (iv) rent from a controlled entity		X
b Gift, grant, or capital contribution to related organization(s)	X	
c Gift, grant, or capital contribution from related organization(s)		X
d Loans or loan guarantees to or for related organization(s)		X
e Loans or loan guarantees by related organization(s)		X
f Dividends from related organization(s)		X
g Sale of assets to related organization(s)		X
h Purchase of assets from related organization(s)		X
i Exchange of assets with related organization(s)		X
j Lease of facilities, equipment, or other assets to related organization(s)		X
k Lease of facilities, equipment, or other assets from related organization(s)		X
l Performance of services or membership or fundraising solicitations for related organization(s)		X
m Performance of services or membership or fundraising solicitations by related organization(s)		X
n Sharing of facilities, equipment, mailing lists, or other assets with related organization(s)		X
o Sharing of paid employees with related organization(s)		X
p Reimbursement paid to related organization(s) for expenses		X
q Reimbursement paid by related organization(s) for expenses		X
r Other transfer of cash or property to related organization(s)		X
s Other transfer of cash or property from related organization(s)		X

2 If the answer to any of the above is "Yes," see the instructions for information on who must complete this line, including covered relationships and transaction thresholds.

	(a) Name of related organization	(b) Transaction type (a-s)	(c) Amount involved	(d) Method of determining amount involved
(1)	YORK TECHNICAL COLLEGE	B	54,643	FMV
(2)	YORK TECHNICAL COLLEGE	J	84,612	FMV
(3)	YORK TECHNICAL COLLEGE	K	3,000	FMV
(4)	YORK TECHNICAL COLLEGE	O	35,000	FMV
(5)	YORK TECHNICAL COLLEGE	P	51,155	FMV
(6)				

**Part VI** Unrelated Organizations Taxable as a Partnership Complete if the organization answered "Yes" on Form 990, Part IV, line 37.

Provide the following information for each entity taxed as a partnership through which the organization conducted more than five percent of its activities (measured by total assets or gross revenue) that was not a related organization. See instructions regarding exclusion for certain investment partnerships.

(1)	(a) Name, address, and EIN of entity	(b) Primary activity	(c) Legal domicile (state or foreign country)	(d) Predominant income (related, unrelated, excluded from tax under sections 512-514)	(e) Are all partners section 501(c)(3) organizations?		(f) Share of total income	(g) Share of end-of-year assets	(h) Disproportionate allocations?		(i) Code V—UBI amount in box 20 of Schedule K-1 (Form 1065)	(j) General or managing partner?		(k) Percentage ownership
					Yes	No			Yes	No		Yes	No	
(1)														
(2)														
(3)														
(4)														
(5)														
(6)														
(7)														
(8)														
(9)														
(10)														
(11)														



# Federal Statements

## Taxable Interest on Investments

<u>Description</u>	<u>Amount</u>	<u>Unrelated Business Code</u>	<u>Exclusion Code</u>	<u>Postal Code</u>	<u>Acquired after 6/30/75</u>	<u>US Obs (\$ or %)</u>
INTEREST	\$ 87,211		14			
TOTAL	<u>\$ 87,211</u>					

# Federal Statements

## Form 990, Part IX, Line 11g - Other Fees for Service (Non-employee)

Description	Total Expenses	Program Service	Management & General	Fund Raising
OTHER FEES	\$ 4,500	\$	\$ 4,500	\$
TOTAL	\$ 4,500	\$ 0	\$ 4,500	\$ 0

27033001 York Technical College Foundation,  
57-0756721  
FYE: 6/30/2015

# Federal Statements

## Schedule A, Part II, Line 1(e)

Description	Amount
OTHER	\$ 1,445,934
CHESTER HEALTHCARE FOUNDATION	25,000
CASH CONTRIBUTION	
HOPEWELL FOUNDATION	25,000
CASH CONTRIBUTION	
AMP AGENCY INC	5,000
CASH CONTRIBUTION	
BARNE'S AND NOBLE	5,000
CASH CONTRIBUTION	
BLUE CROSS BLUE SHIELD OF SC	27,150
CASH CONTRIBUTION	
THE CHESTER FOUNDATION	200,000
CASH CONTRIBUTION	
FAMILY TRUST FEDERAL CREDIT UNION	10,000
CASH CONTRIBUTION	
FIRST CITIZENS BANK	6,000
CASH CONTRIBUTION	
HARRY M. MILLER	11,000
CASH CONTRIBUTION	
GREGORY F. RUTHERFORD	10,100
CASH CONTRIBUTION	
TENET HEALTHCARE CORPORATION	20,000
CASH CONTRIBUTION	
YORK ELECTRIC COOPERATIVE INC	60,000
CASH CONTRIBUTION	
TOTAL	\$ 1,850,184



# Federal Statements

## Schedule A, Part II, Line 5 - Excess Gifts

<u>Donor Name</u>	<u>Total</u>	<u>Excess</u>
	\$ 500,000	\$ 398,226
TOTAL	\$ 500,000	\$ 398,226

27033001 York Technical College Foundation,  
57-0756721  
FYE: 6/30/2015

### Federal Statements

#### Schedule A, Part II, Line 8(e)

Description	Amount
INTEREST	\$ 87,211
RENT	84,612
<b>TOTAL</b>	<b>\$ 171,823</b>

#### Schedule A, Part II, Line 12

Description	Amount
OTHER	\$ 947
ANNUAL FUND	
<b>TOTAL</b>	<b>\$ 947</b>



## Filing Instructions

### York Technical College Foundation, Inc.

### Exempt Organization Business Tax Return

Taxable Year Ended June 30, 2015

**Date Due:** November 16, 2015

**Remittance:** None is required. Your Form 990-T for the tax year ended 6/30/15 shows no balance due.

**Mail To:** Department of the Treasury  
Internal Revenue Service Center  
Ogden, UT 84201-0027

If a private delivery service is used, mail to:  
OSPC  
1973 N. Rulon White Blvd.  
Ogden, UT 84404

**Signature:** The return should be signed and dated on Page 2 by an officer representing the organization.

**Other:** Initial and date the copy of the return, and retain it for your records.

York Technical College Foundation,  
Inc.  
US 21 By-Pass  
Rock Hill, SC 29730

Department of the Treasury  
Internal Revenue Service Center  
Ogden, UT 84201-0027



Form **990-T**

# Exempt Organization Business Income Tax Return (and proxy tax under section 6033(e))

# 2014

For calendar year 2014 or other tax year beginning **07/01/14**, and ending **06/30/15**

Information about Form 990-T and its instructions is available at [www.irs.gov/form990t](http://www.irs.gov/form990t).

Open to Public Inspection for 501(c)(3) Organizations Only

Do not enter SSN numbers on this form as it may be made public if your organization is a 501(c)(3).

Department of the Treasury  
Internal Revenue Service

**A**  Check box if address changed

**B** Exempt under section  
 501(c)(3) ( **3** )  
 408(e)  220(e)  
 408A  530(a)  
 529(a)

Name of organization (  Check box if name changed and see instructions.)  
**YORK TECHNICAL COLLEGE FOUNDATION, INC.**

Number, street, and room or suite no. If a P.O. box, see instructions.  
**US 21 BY-PASS**

City or town, state or province, country, and ZIP or foreign postal code  
**ROCK HILL SC 29730**

**D** Employer identification number  
(Employees' trust, see instructions.)  
  
**57-0756721**

**C** Book value of all assets at end of year  
  
**9,255,672**

**F** Group exemption number (See instructions.) ▶

**G** Check organization type ▶  501(c) corporation  501(c) trust  401(a) trust  Other trust

**H** Describe the organization's primary unrelated business activity.  
▶

**I** During the tax year, was the corporation a subsidiary in an affiliated group or a parent-subsidary controlled group? ..... ▶  Yes  No  
If "Yes," enter the name and identifying number of the parent corporation.

**J** The books are in care of ▶ **MELANIE JONES** Telephone number ▶ **803-327-8012**

Part I Unrelated Trade or Business Income		(A) Income	(B) Expenses	(C) Net
1a	Gross receipts or sales			
b	Less returns and allowances			
	<b>c Balance</b> .....	<b>1c</b>		
2	Cost of goods sold (Schedule A, line 7)	<b>2</b>		
3	Gross profit. Subtract line 2 from line 1c	<b>3</b>		
4a	Capital gain net income (attach Schedule D)	<b>4a</b>		
b	Net gain (loss) (Form 4797, Part II, line 17) (attach Form 4797)	<b>4b</b>		
c	Capital loss deduction for trusts	<b>4c</b>		
5	Income (loss) from partnerships and S corporations (attach statement)	<b>5</b>		
6	Rent income (Schedule C)	<b>6</b>		
7	Unrelated debt-financed income (Schedule E)	<b>7</b>		
8	Interest, annuities, royalties, and rents from controlled organizations (Schedule F)	<b>8</b>		
9	Investment income of a section 501(c)(7), (9), or (17) organization (Schedule G)	<b>9</b>		
10	Exploited exempt activity income (Schedule I)	<b>10</b>		
11	Advertising income (Schedule J)	<b>11</b>		
12	Other income (See instructions; attach schedule)	<b>12</b>		
13	<b>Total.</b> Combine lines 3 through 12	<b>13</b>	<b>0</b>	<b>0</b>

Part II Deductions Not Taken Elsewhere (See instructions for limitations on deductions.) (Except for contributions, deductions must be directly connected with the unrelated business income.)			
14	Compensation of officers, directors, and trustees (Schedule K)	<b>14</b>	
15	Salaries and wages	<b>15</b>	
16	Repairs and maintenance	<b>16</b>	
17	Bad debts	<b>17</b>	
18	Interest (attach schedule)	<b>18</b>	
19	Taxes and licenses	<b>19</b>	
20	Charitable contributions (See instructions for limitation rules)	<b>20</b>	
21	Depreciation (attach Form 4562)	<b>21</b>	
22	Less depreciation claimed on Schedule A and elsewhere on return	<b>22a</b>	<b>22b</b> 0
23	Depletion	<b>23</b>	
24	Contributions to deferred compensation plans	<b>24</b>	
25	Employee benefit programs	<b>25</b>	
26	Excess exempt expenses (Schedule I)	<b>26</b>	
27	Excess readership costs (Schedule J)	<b>27</b>	
28	Other deductions (attach schedule)	<b>28</b>	
29	<b>Total deductions.</b> Add lines 14 through 28	<b>29</b>	
30	Unrelated business taxable income before net operating loss deduction. Subtract line 29 from line 13	<b>30</b>	
31	Net operating loss deduction (limited to the amount on line 30)	<b>31</b>	
32	Unrelated business taxable income before specific deduction. Subtract line 31 from line 30	<b>32</b>	
33	Specific deduction (Generally \$1,000, but see line 33 instructions for exceptions)	<b>33</b>	
34	<b>Unrelated business taxable income.</b> Subtract line 33 from line 32. If line 33 is greater than line 32, enter the smaller of zero or line 32	<b>34</b>	<b>0</b>

**Part III Tax Computation**

<b>35</b>	<b>Organizations Taxable as Corporations.</b> See instructions for tax computation. Controlled group members (sections 1561 and 1563) check here <input type="checkbox"/> See instructions and:	
a	Enter your share of the \$50,000, \$25,000, and \$9,925,000 taxable income brackets (in that order): (1) \$ _____ (2) \$ _____ (3) \$ _____	
b	Enter organization's share of: (1) Additional 5% tax (not more than \$11,750) ..... \$ _____ (2) Additional 3% tax (not more than \$100,000) ..... \$ _____	
c	Income tax on the amount on line 34 .....	<b>35c</b>
<b>36</b>	<b>Trusts Taxable at Trust Rates.</b> See instructions for tax computation. Income tax on the amount on line 34 from: <input type="checkbox"/> Tax rate schedule or <input type="checkbox"/> Schedule D (Form 1041) .....	<b>36</b>
<b>37</b>	<b>Proxy tax.</b> See instructions .....	<b>37</b>
<b>38</b>	<b>Alternative minimum tax</b> .....	<b>38</b>
<b>39</b>	<b>Total.</b> Add lines 37 and 38 to line 35c or 36, whichever applies .....	<b>39</b>

**Part IV Tax and Payments**

<b>40a</b>	Foreign tax credit (corporations attach Form 1118; trusts attach Form 1116) .....	<b>40a</b>	
b	Other credits (see instructions) .....	<b>40b</b>	
c	General business credit. Attach Form 3800 (see instructions) .....	<b>40c</b>	
d	Credit for prior year minimum tax (attach Form 8801 or 8827) .....	<b>40d</b>	
e	<b>Total credits.</b> Add lines 40a through 40d .....	<b>40e</b>	
<b>41</b>	Subtract line 40e from line 39 .....	<b>41</b>	
<b>42</b>	Other taxes. Check if from: <input type="checkbox"/> Form 4255 <input type="checkbox"/> Form 8611 <input type="checkbox"/> Form 8697 <input type="checkbox"/> Form 8866 <input type="checkbox"/> Other (att. sch.) .....	<b>42</b>	
<b>43</b>	<b>Total tax.</b> Add lines 41 and 42 .....	<b>43</b>	<b>0</b>
<b>44a</b>	Payments: A 2013 overpayment credited to 2014 .....	<b>44a</b>	
b	2014 estimated tax payments .....	<b>44b</b>	
c	Tax deposited with Form 8868 .....	<b>44c</b>	
d	Foreign organizations: Tax paid or withheld at source (see instructions) .....	<b>44d</b>	
e	Backup withholding (see instructions) .....	<b>44e</b>	
f	Credit for small employer health insurance premiums (Attach Form 8941) .....	<b>44f</b>	
g	Other credits and payments: <input type="checkbox"/> Form 2439 _____ <input type="checkbox"/> Form 4136 _____ <input type="checkbox"/> Other _____ Total ▶	<b>44g</b>	
<b>45</b>	<b>Total payments.</b> Add lines 44a through 44g .....	<b>45</b>	
<b>46</b>	Estimated tax penalty (see instructions). Check if Form 2220 is attached .....	<b>46</b>	
<b>47</b>	<b>Tax due.</b> If line 45 is less than the total of lines 43 and 46, enter amount owed .....	<b>47</b>	
<b>48</b>	<b>Overpayment.</b> If line 45 is larger than the total of lines 43 and 46, enter amount overpaid .....	<b>48</b>	
<b>49</b>	Enter the amount of line 48 you want: Credited to 2015 estimated tax ▶ <b>Refunded</b> ▶	<b>49</b>	

**Part V Statements Regarding Certain Activities and Other Information (see instructions)**

<b>1</b>	At any time during the 2014 calendar year, did the organization have an interest in or a signature or other authority over a financial account (bank, securities, or other) in a foreign country? If YES, the organization may have to file FinCEN Form 114, Report of Foreign Bank and Financial Accounts. If YES, enter the name of the foreign country here ▶	Yes	No
<b>2</b>	During the tax year, did the organization receive a distribution from, or was it the grantor of, or transferor to, a foreign trust? If YES, see instructions for other forms the organization may have to file.		<b>X</b>
<b>3</b>	Enter the amount of tax-exempt interest received or accrued during the tax year ▶ \$		

**Schedule A - Cost of Goods Sold. Enter method of inventory valuation ▶**

<b>1</b>	Inventory at beginning of year	<b>1</b>		<b>6</b>	Inventory at end of year	<b>6</b>	
<b>2</b>	Purchases	<b>2</b>		<b>7</b>	Cost of goods sold. Subtract line 6 from line 5. Enter here and in Part I, line 2	<b>7</b>	
<b>3</b>	Cost of labor	<b>3</b>					
<b>4a</b>	Additional sec. 263A costs (attach schedule)	<b>4a</b>					Yes No
<b>b</b>	Other costs (attach schedule)	<b>4b</b>					
<b>5</b>	<b>Total.</b> Add lines 1 through 4b	<b>5</b>					

Under penalties of perjury, I declare that I have examined this return, including accompanying schedules and statements, and to the best of my knowledge and belief, it is true, correct, and complete. Declaration of preparer (other than taxpayer) is based on all information of which preparer has any knowledge.

**Sign Here** ▶ Signature of officer: \_\_\_\_\_ Date: \_\_\_\_\_ Title: **EXECUTIVE DIRECTOR**

May the IRS discuss this return with the preparer shown below (see instructions)?  Yes  No

**Paid Preparer Use Only**

Print/Type preparer's name	Preparer's signature	Date	Check <input checked="" type="checkbox"/> if self-employed	PTIN
HARRY D DELOACH	<i>Harry D DeLoach</i>	10/02/15		P00592698
Firm's name	Firm's EIN			
THE BRITTINGHAM GROUP, LLP	46-4116137			
Firm's address	Phone no.			
PO BOX 5949 WEST COLUMBIA, SC 29171-5949	803-739-3090			

**Schedule C – Rent Income (From Real Property and Personal Property Leased With Real Property)**

(see instructions)

1. Description of property

(1) <b>N/A</b>
(2)
(3)
(4)

2. Rent received or accrued

(a) From personal property (if the percentage of rent for personal property is more than 10% but not more than 50%)	(b) From real and personal property (if the percentage of rent for personal property exceeds 50% or if the rent is based on profit or income)	3(a) Deductions directly connected with the income in columns 2(a) and 2(b) (attach schedule)
(1)		
(2)		
(3)		
(4)		
Total		(b) Total deductions. Enter here and on page 1, Part I, line 6, column (B) ▶

(c) Total income. Add totals of columns 2(a) and 2(b). Enter here and on page 1, Part I, line 6, column (A) ▶

**Schedule E – Unrelated Debt-Financed Income (see instructions)**

1. Description of debt-financed property	2. Gross income from or allocable to debt-financed property	3. Deductions directly connected with or allocable to debt-financed property		
		(a) Straight line depreciation (attach schedule)	(b) Other deductions (attach schedule)	
(1) <b>N/A</b>				
(2)				
(3)				
(4)				
4. Amount of average acquisition debt on or allocable to debt-financed property (attach schedule)	5. Average adjusted basis of or allocable to debt-financed property (attach schedule)	6. Column 4 divided by column 5	7. Gross income reportable (column 2 x column 6)	8. Allocable deductions (column 6 x total of columns 3(a) and 3(b))
(1)		%		
(2)		%		
(3)		%		
(4)		%		
Totals			Enter here and on page 1, Part I, line 7, column (A).	Enter here and on page 1, Part I, line 7, column (B).

Total dividends-received deductions included in column 8 ▶

**Schedule F – Interest, Annuities, Royalties, and Rents From Controlled Organizations (see instructions)**

1. Name of controlled organization	2. Employer identification number	Exempt Controlled Organizations			
		3. Net unrelated income (loss) (see instructions)	4. Total of specified payments made	5. Part of column 4 that is included in the controlling organization's gross inc.	6. Deductions directly connected with income in column 5
(1) <b>N/A</b>					
(2)					
(3)					
(4)					

**Nonexempt Controlled Organizations**

7. Taxable Income	8. Net unrelated income (loss) (see instructions)	9. Total of specified payments made	10. Part of column 9 that is included in the controlling organization's gross income	11. Deductions directly connected with income in column 10
(1)				
(2)				
(3)				
(4)				
Totals			Add columns 5 and 10. Enter here and on page 1, Part I, line 8, column (A).	Add columns 6 and 11. Enter here and on page 1, Part I, line 8, column (B).



**Schedule G – Investment Income of a Section 501(c)(7), (9), or (17) Organization** (see instructions)

1. Description of income	2. Amount of income	3. Deductions directly connected (attach schedule)	4. Set-asides (attach schedule)	5. Total deductions and set-asides (col. 3 plus col.4)
(1) <b>N/A</b>				
(2)				
(3)				
(4)				
<b>Totals</b>		Enter here and on page 1, Part I, line 9, column (A).		Enter here and on page 1, Part I, line 9, column (B).

**Schedule I – Exploited Exempt Activity Income, Other Than Advertising Income** (see instructions)

1. Description of exploited activity	2. Gross unrelated business income from trade or business	3. Expenses directly connected with production of unrelated business income	4. Net income (loss) from unrelated trade or business (column 2 minus column 3). If a gain, compute cols. 5 through 7.	5. Gross income from activity that is not unrelated business income	6. Expenses attributable to column 5	7. Excess exempt expenses (column 6 minus column 5, but not more than column 4).
(1) <b>N/A</b>						
(2)						
(3)						
(4)						
<b>Totals</b>		Enter here and on page 1, Part I, line 10, col. (A).	Enter here and on page 1, Part I, line 10, col. (B).			Enter here and on page 1, Part II, line 26.

**Schedule J – Advertising Income** (see instructions)

**Part I Income From Periodicals Reported on a Consolidated Basis**

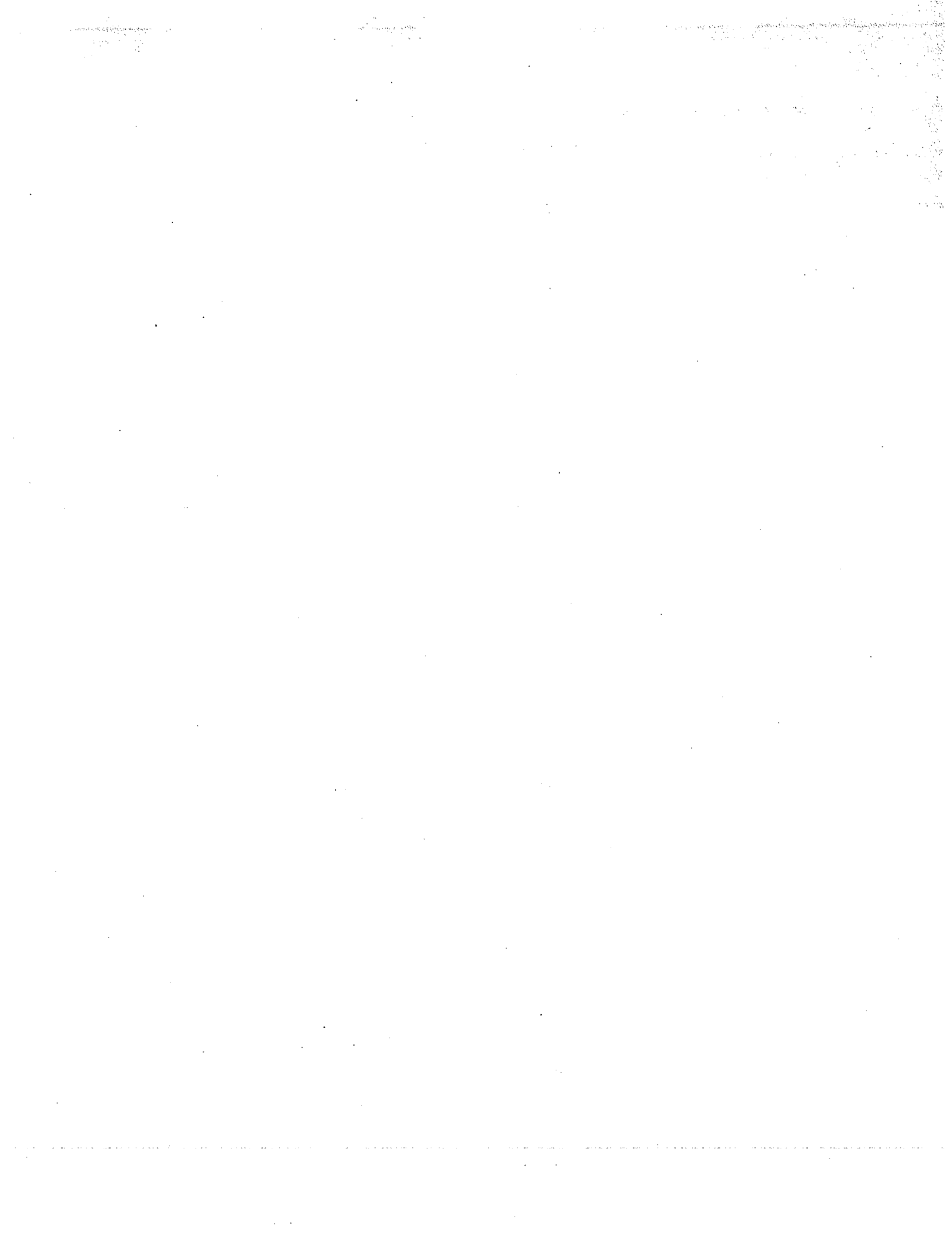
1. Name of periodical	2. Gross advertising income	3. Direct advertising costs	4. Advertising gain or (loss) (col. 2 minus col. 3). If a gain, compute cols. 5 through 7.	5. Circulation income	6. Readership costs	7. Excess readership costs (column 6 minus column 5, but not more than column 4).
(1) <b>N/A</b>						
(2)						
(3)						
(4)						
<b>Totals (carry to Part II, line (5))</b>						

**Part II Income From Periodicals Reported on a Separate Basis** (For each periodical listed in Part II, fill in columns 2 through 7 on a line-by-line basis.)

1. Name of periodical	2. Gross advertising income	3. Direct advertising costs	4. Advertising gain or (loss) (col. 2 minus col. 3). If a gain, compute cols. 5 through 7.	5. Circulation income	6. Readership costs	7. Excess readership costs (column 6 minus column 5, but not more than column 4).
(1) <b>N/A</b>						
(2)						
(3)						
(4)						
<b>Totals from Part I</b>						
<b>Totals, Part II (lines 1-5)</b>		Enter here and on page 1, Part I, line 11, col. (A).	Enter here and on page 1, Part I, line 11, col. (B).			Enter here and on page 1, Part II, line 27.

**Schedule K – Compensation of Officers, Directors, and Trustees** (see instructions)

1. Name	2. Title	3. Percent of time devoted to business	4. Compensation attributable to unrelated business
(1) <b>N/A</b>		%	
(2)		%	
(3)		%	
(4)		%	
<b>Total. Enter here and on page 1, Part II, line 14</b>			



\* \* \* \* \*

INSTRUCTIONS FOR FILING  
STATE OF SOUTH CAROLINA REQUIRED FILING  
FORM SC 990-T - EXEMPT UNDER 501 (C) (3)  
FOR THE PERIOD ENDED JUNE 30, 2015

\* \* \* \* \*

**SIGNATURE...**

THE ORIGINAL RETURN SHOULD BE SIGNED (USING FULL NAME AND TITLE)  
AND DATED BY AN AUTHORIZED OFFICER OF THE ORGANIZATION.

**FILING...**

THE SIGNED RETURN SHOULD BE FILED ON OR BEFORE NOVEMBER 15, 2015  
WITH THE:

DEPARTMENT OF REVENUE  
CORPORATE TAX RETURN  
COLUMBIA, SOUTH CAROLINA 29214-0100

**PAYMENT OF TAX...**

NO PAYMENT OF TAX IS REQUIRED.

**MAILING...**

IF THE RETURN IS NOT MAILED IN SUFFICIENT TIME TO REACH THE  
DESTINATION ON OR BEFORE THE FILING DATE, WE SUGGEST THAT IT BE  
MAILED BY EITHER REGISTERED OR CERTIFIED MAIL WITH THE SENDER'S  
RECEIPT POSTMARKED TO PROVE MAILING BEFORE THE DUE DATE.

THO

STATE OF SOUTH CAROLINA  
DEPARTMENT OF REVENUE  
EXEMPT ORGANIZATION  
BUSINESS TAX RETURN

Return is due on or before the 15th day of the  
5th month following the close of the taxable year.

Mail this return to:  
SC DEPARTMENT OF REVENUE  
Corporation Return  
Columbia, SC 29214-0100

SC 990-T  
(Rev. 6/12/14)  
3315

TAXPAYER ID INFORMATION

SC FILE # \_\_\_\_\_

INCOME TAX PERIOD ENDING JUNE 30, 2015

FEIN 57-0756721

NAME YORK TECHNICAL COLLEGE FOUNDATION, INC.

MAILING ADDRESS US 21 BY-PASS

CITY ROCK HILL STATE SC ZIP CODE 29730

Change of  Address  Accounting Period

Attach complete copy of Federal Return.

Check here if you filed a federal or state extension.

Check if  Initial Return  Amended Return

If Final Return, Indicate Whether:  Merged  
 Reorganized  Dissolved  Withdrawn

County or Counties in SC Where Property is Located:  
YORK

City ROCK HILL Audit Location SOUTH CAROLINA State SOUTH CAROLINA

Audit Contact MELANIE JONES Telephone Number 803-327-8012

14-0804

- 1. Federal unrelated business taxable income from Form 990T. . . . . 1. NONE
- 2. Net Adjustment from line 12, Schedule A and B . . . . . 2. NONE
- 3. Total Net Income as Reconciled (line 1 plus or minus line 2) . . . . . 3. NONE
- 4. If Multi-state Organization, enter amount from line 6, Sch. G; otherwise, enter amount from line 3 . . . . . 4. \_\_\_\_\_
- 5. LESS: South Carolina net operating loss carryover, if applicable . . . . . 5. NONE
- 6. South Carolina Net Income Subject to tax (line 4 less line 5) . . . . . 6. NONE
- 7. TAX: Multiply amount on line 6 by .05 (5.0%) . . . . . 7. NONE
- 8. Non-refundable credits from line 5, Schedule C . . . . . 8. \_\_\_\_\_
- 9. Balance of tax (line 7 less line 8) Enter the difference but not less than zero . . . . . 9. \_\_\_\_\_
- 10. Payments: (a) Tax Withheld (Attach 1099s, I-290s, and/or W-2s) \_\_\_\_\_  
(b) Paid by Declaration \_\_\_\_\_ (c) Paid with Tentative Return \_\_\_\_\_
- 11. Total Payments (add lines 10a through 10c) . . . . . 11. NONE
- 12. Balance of Tax Due (line 9 less line 11) . . . . . 12. NONE
- 13. Interest Due ▶ \_\_\_\_\_ Penalty Due ▶ \_\_\_\_\_ (See instructions for penalty and interest.) ▶ 13. \_\_\_\_\_
- 14. TOTAL INCOME TAX, Interest and Penalty (add lines 12 and 13) . . . . . BALANCE DUE ▶ 14. NONE
- 15. OVERPAYMENT (line 11 less line 9) \_\_\_\_\_ To be applied as follows:  
(a) Estimated Tax ▶ \_\_\_\_\_ (b) REFUNDED ▶ \_\_\_\_\_

Make check payable to: South Carolina Department of Revenue. Include Business Name, FEIN and SC File #.

**SCHEDULE A AND B ADDITIONS TO FEDERAL TAXABLE INCOME**

- 1. Taxes on or Measured By Income . . . . . 1. \_\_\_\_\_
- 2. Federal Net Operating Loss . . . . . 2. \_\_\_\_\_
- 3. \_\_\_\_\_ 3. \_\_\_\_\_
- 4. \_\_\_\_\_ 4. \_\_\_\_\_
- 5. Other Additions (attach schedule) . . . . . 5. \_\_\_\_\_
- 6. Total Additions (add lines 1 through 5) . . . . . 6. \_\_\_\_\_

**DEDUCTIONS FROM FEDERAL TAXABLE INCOME**

- 7. Interest On Obligations Of The U.S. . . . . 7. \_\_\_\_\_
- 8. \_\_\_\_\_ 8. \_\_\_\_\_
- 9. \_\_\_\_\_ 9. \_\_\_\_\_
- 10. Other Deductions (attach schedule) . . . . . 10. \_\_\_\_\_
- 11. Total Deductions (add lines 7 through 10). . . . . 11. \_\_\_\_\_
- 12. Net Adjustment (line 6 less line 11) Also enter on line 2, Page 1, SC990-T . . . . . 12. \_\_\_\_\_

**SCHEDULE C SUMMARY OF INCOME TAX CREDITS (FROM SC1120-TC)**

- 1. Credit Carryover From Previous Year's SC990-T, Schedule C (NOTE: Should agree to SC1120-TC Column A, line 16) . . . . . 1. \_\_\_\_\_
- 2. Enter Total Credits from SC1120-TC, Column B, line 16. SC1120-TC must be attached to return. . . . . 2. \_\_\_\_\_
- 3. Total Credits (add lines 1 and 2). . . . . 3. \_\_\_\_\_
- 4. Tax (line 7, SC990-T). . . . . 4. \_\_\_\_\_
- 5. Lesser of line 3 or 4 (enter on line 8, SC990-T) (NOTE: Should agree to SC1120-TC, Column C, line 16.) . . . . . 5. \_\_\_\_\_
- 6. Enter Credits Lost Due to Statute (NOTE: Should agree to SC1120-TC, Column D, line 16.) . . . . . 6. \_\_\_\_\_
- 7. Credit Carryover (line 3 less line 5 and 6) (NOTE: Should agree to SC1120-TC, Column E, line 16.) . . . . . 7. \_\_\_\_\_

**SCHEDULE D RESERVED**  
**SCHEDULE E RESERVED**

Please Sign Here I, the undersigned, a principal officer of the corporation for which this return is made declare that this return, including accompanying Annual Report, statements and schedules, has been examined by me and is to the best of my knowledge and belief, a true and complete return.

Signature of officer	Officer's title	Email
Officer's printed name	Date	Telephone Number

I authorize the Director of the Department of Revenue or delegate to discuss this return, attachments and related tax matters with the preparer.	Yes <input checked="" type="checkbox"/>	No <input type="checkbox"/>	Preparer's Printed Name <b>HARRY D. DELOACH</b>
Paid Preparer's signature <i>Harry D. DeLoach</i>	Date <i>10/8/15</i>	Check if self-employed <input checked="" type="checkbox"/>	Preparer's Telephone Number <b>803-739-3090</b>
Use Only Firm's name (or yours if self-employed) and address <b>THE BRITTINGHAM GROUP, LLP PO BOX 5949 WEST COLUMBIA, SC 29171-5949</b>	PTIN or FEIN <b>46-4116137</b>		ZIP Code <b>29171-5949</b>

If this is an organization's final return, signing here authorizes the Department of Revenue to disclose that information with the Secretary of State. You must close with the Secretary of State as well as the Department of Revenue.

Taxpayer's Signature	Date
----------------------	------

**ONLY MULTI-STATE ORGANIZATIONS MUST COMPLETE SCHEDULES F, G, AND H**

**SCHEDULE F INCOME SUBJECT TO DIRECT ALLOCATION**

	Gross Amounts 1	Less: Related Expenses 2	Net Amounts Allocated Direct. to SC and Other States 3	Net Amounts Allocated Directly to SC 4
1. Interest not connected with business				
2. Dividends received				
3. Rents				
4. Gains/losses on real property				
5. Gains/losses on intangible pers. prop.				
6. Investment income directly allocated				
7. TOTAL INCOME DIRECTLY ALLOCATED				
8. INCOME DIRECTLY ALLOCATED TO SC				

**SCHEDULE G COMPUTATION OF TAXABLE INCOME FOR ORGANIZATIONS CLAIMING MULTI-STATE OPERATIONS**

1. Total net income as reconciled. Enter amount from line 3, Page 1	1.
2. Less: Income subject to direct allocation to SC and other states from Schedule F, line 7	2.
3. Total net income subject to apportionment (line 1 less line 2)	3.
4. Multiply amount on line 3 by appropriate ratio from Schedule H-1, 2, or 3 and enter result here	4.
5. Add: Income subject to direct allocation to SC from Schedule F, line 8	5.
6. Total SC Net Income (sum of lines 4 and 5 above) also enter on line 4, Page 1	6.

**SCHEDULE H-1 COMPUTATION OF SALES RATIO**

	Amount	Ratio
1. Total Sales Within South Carolina (see instructions)		
2. Total Sales Everywhere (see instructions)		
3. Sales Ratio (line 1 ÷ line 2)		%

NOTE: If there are no sales anywhere: Enter 100% on line 3 if South Carolina is the principal place of business OR Enter 0% if the principal place of business is outside of South Carolina.

**SCHEDULE H-2 COMPUTATION OF GROSS RECEIPTS RATIO**

	Amount	Ratio
1. South Carolina Gross Receipts		
2. Amounts Allocated to South Carolina on Schedule F	< >	
3. South Carolina Adjusted Gross Receipts (line 1 - line 2)		
4. Total Gross Receipts		
5. Total Amounts Allocated on Schedule F	< >	
6. Total Adjusted Gross Receipts (line 4 - line 5)		
7. Gross Receipts Ratio (line 3 ÷ line 6)		%

**SCHEDULE H-3 COMPUTATION OF RATIO FOR SECTION 12-6-2310 COMPANIES**

	Amount	Ratio
1. Total Within South Carolina (see instructions)		
2. Total Everywhere		
3. Taxable Ratio (line 1 ÷ line 2)		%



\* \* \* \* \*

INSTRUCTIONS FOR FILING  
STATE OF SOUTH CAROLINA REQUIRED FILING  
FORM 990 WITH SCHEDULE A - EXEMPT UNDER 501(C)(3)  
FOR THE PERIOD ENDED JUNE 30, 2015

\* \* \* \* \*

SIGNATURE...

THE ORIGINAL RETURN SHOULD BE SIGNED (USING FULL NAME AND TITLE)  
AND DATED BY AN AUTHORIZED OFFICER OF THE ORGANIZATION.

FILING...

THE SIGNED RETURN SHOULD BE FILED ON OR BEFORE NOVEMBER 16, 2015  
WITH THE:

STATE OF SOUTH CAROLINA  
OFFICE OF THE SECRETARY OF STATE  
1205 PENDLETON STREET, SUITE 525  
COLUMBIA, SOUTH CAROLINA 29201

PAYMENT OF TAX...

NO PAYMENT OF TAX IS REQUIRED.

MAILING...

IF THE RETURN IS NOT MAILED IN SUFFICIENT TIME TO REACH ITS  
DESTINATION ON OR BEFORE THE FILING DATE, WE SUGGEST THAT IT BE  
MAILED BY EITHER REGISTERED OR CERTIFIED MAIL WITH THE SENDER'S  
RECEIPT POSTMARKED TO PROVE MAILING BEFORE THE DUE DATE.